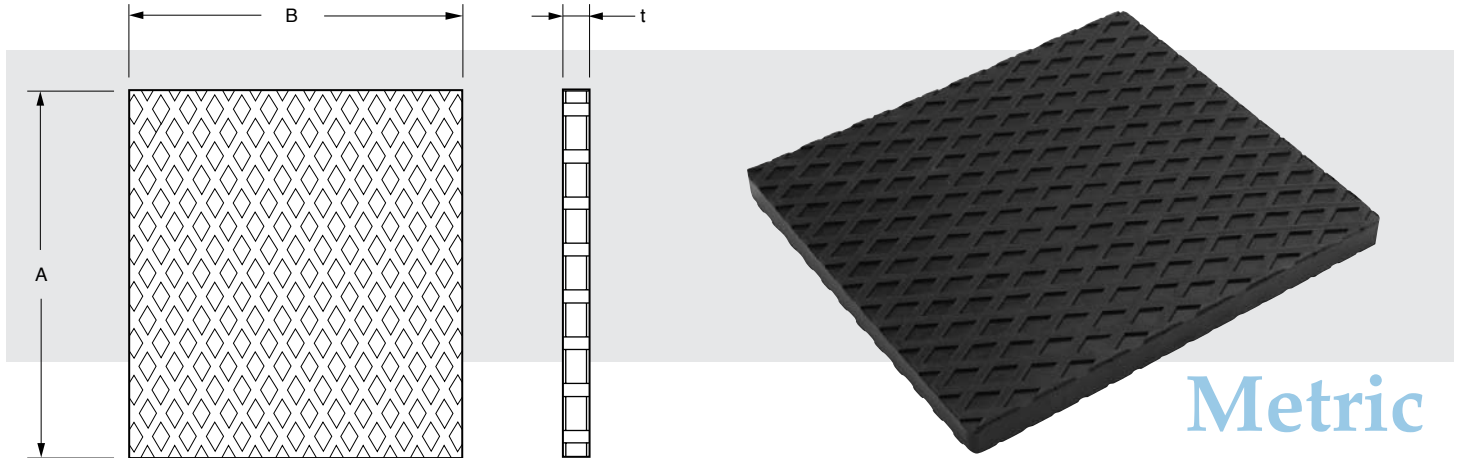




Pad - Rubber

www.vibrationmounts.com Phone: 516.328.3662 Fax: 516.328.3365

- **MATERIAL:** Nitrile Rubber Compound, Oil-Resistant



Catalog Number	A	B	t	Max. Load kgf/cm ² (lb/in ²)
V12R67M220201	220 (8.66)	201 (7.91)	16 (.63)	15 (213)

NOTE: Dimensions in () are inch.

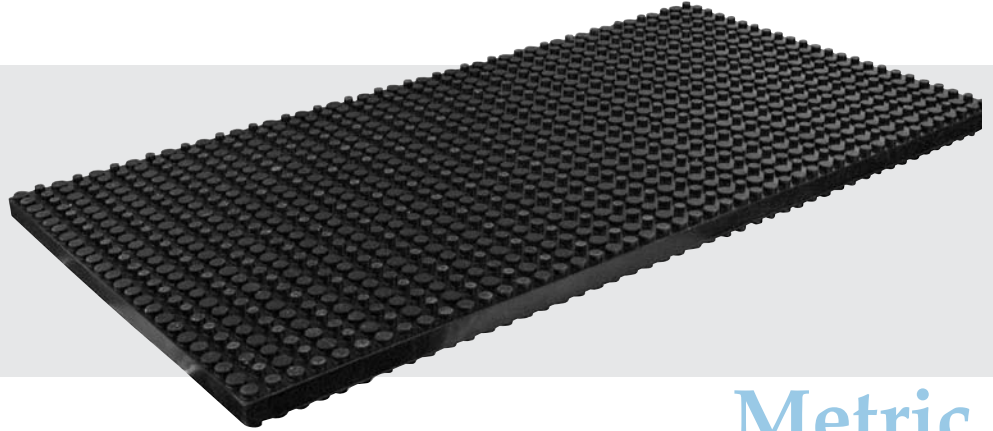
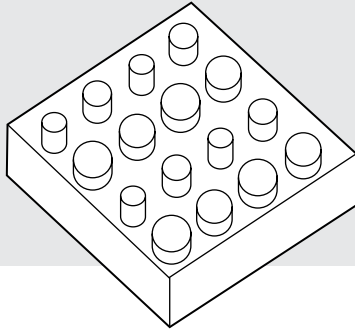
Pads – Rubber



www.vibrationmounts.com Phone: 516.328.3662 Fax: 516.328.3365

- **MATERIAL:** Natural Rubber

ENLARGED TO SHOW PAD DETAIL



Metric

FEATURES:

- The part has protrusions of 4 different diameters and heights on both surfaces. Depending on the load, varying amount of contact surface is engaged giving a low natural frequency on wide ranges of load.

SELECTION PROCEDURE:

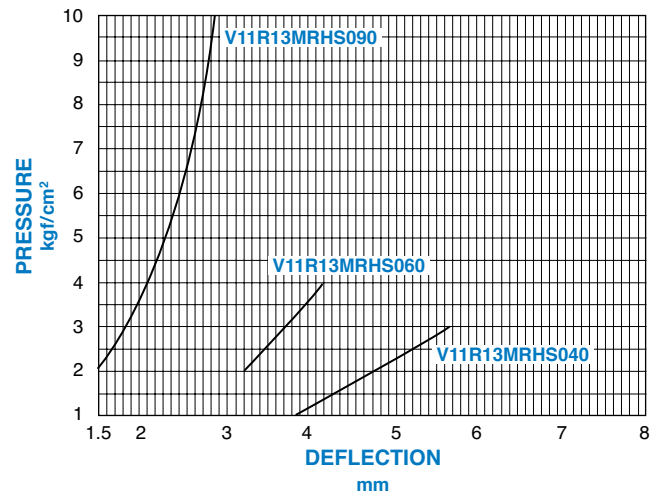
1. Choose the part number depending on the equipment.
2. Determine the surface pressure on the pad. Generally, choose the midpoint of the range for the selected pad for safety. For the maximum vibration isolation, pick the support pressure near the maximum.

$$3. \text{ Needed pad area (cm}^2\text{)} = \frac{\text{machine load (kg)}}{\text{the support pressure of selected pad (kgf/cm}^2\text{)}}$$

$$4. \text{ Pad area of each support point} = \frac{\text{needed pad area (cm}^2\text{)}}{\text{No. of support points of the machine}}$$

5. After calculating the size, allow at least 1 cm margin around the support point. If two layers of pads are going to be used, insert a steel plate thicker than 3 mm between the pads.

PERFORMANCE CHART



TEMPERATURE RANGE: -30°C to +70°C (-22°F to +158°F)

Catalog Number	Size L x W x t	Hardness Duro. Type A	Support Pressure kgf/cm ² (lb./in ²)
V11R13MRHS040	240 X 460 X 18 (9.4 X 18.1 X .71)	40	1 to 3 (14 to 43)
V11R13MRHS060		60	2 to 4 (28 to 57)
V11R13MRHS090		90	2 to 10 (28 to 142)

NOTE: Dimensions in () are inch.

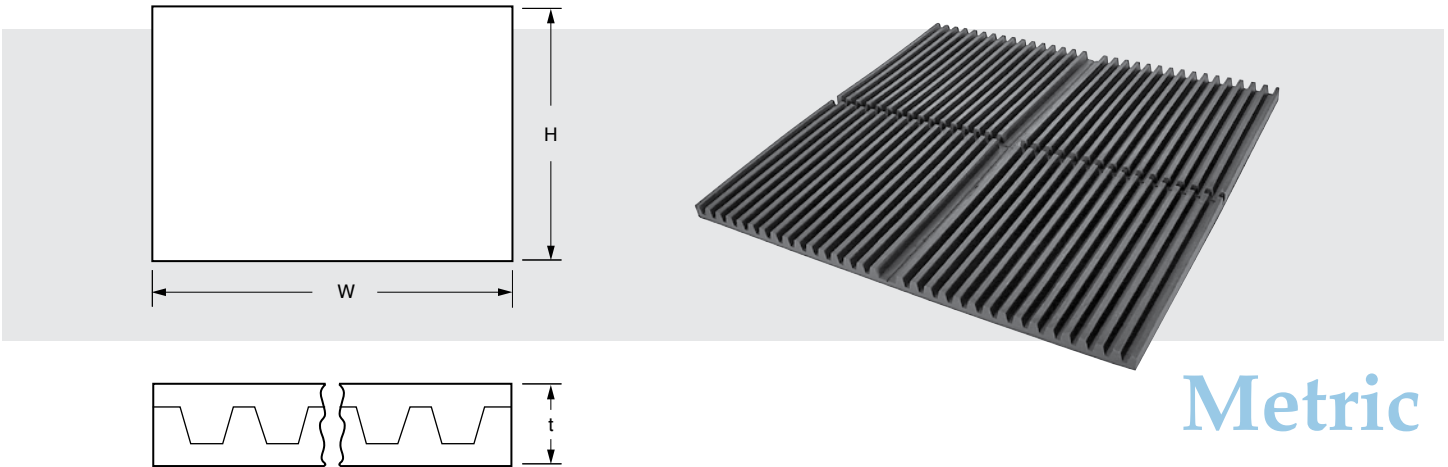


Pads – Paired Ribbed

www.vibrationmounts.com Phone: 516.328.3662 Fax: 516.328.3365

• **MATERIAL:** Natural Black Rubber (Ozone-Resistant Rubber)

• **VERSATILE**
• **SMALL FOOTPRINT**



Metric

Fig. 1 Shown for example

The serrated sides of the pads enable the pads to fit together so that they generate greater continuity to help insulate vibrations better. PADS (matched antivibratory pads), compress simultaneously, whether or not they are of the same hardness.

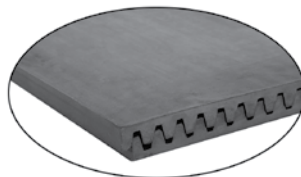


Fig. 1

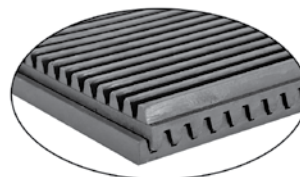


Fig. 2

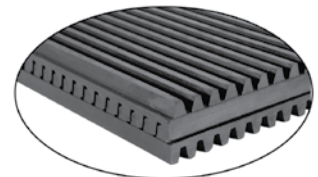


Fig. 3

Catalog Number	Fig. No.	H Height mm (in.)	W Width mm (in.)	t Thickness mm (in.)	Compression Load N/cm ² (lb./in. ²)	Admissible Temporary Overload %	Made up of
V10R78MD400-16	1	380 (14.96)	380 (14.96)	16 (.63)	35 (51)	30	(2x) V10R78MS400-12N
V10R78MD400-24	2	380 (14.96)	380 (14.96)	24 (.95)	40 (58)	30	(1x) V10R78MS400-12N (1x) V10R78MS400-20N
V10R78MD400-32	3	380 (14.96)	380 (14.96)	32 (1.26)	45 (65)	30	(2x) V10R78MS400-20N

GIVE IT A TRY

GET TO KNOW BEFORE YOU BUY

At vibrationmounts.com you can request, download or view any of our catalogs with ease. Detailed descriptions of the products are also available, including related articles and press releases that were published in various design publications.

www.vibrationmounts.com

& Vibr

store Free Ca

Mounts Plate Shock R

Dericho Turnpike

Phone: 516-

Vibration Da

ration mounts for

240-page catalo

ation Component

nts, suspension

ange of material

r and Sorbothane

itions.

atures, beyond t

d over 300 shaft

shaft to shaft.

om stock for imr

for many types

cludes two exte

many topics such

ration Isolation

Couplings feature

Performance Chara

cted by a well-kn

iversity, Detroit, t

Contents below

o view the PDF

copy of Adobe A

TERMS

Con

roduction

itorial Index

t Number Inde

ection Procedu

id & Nut Type M

are Mounts

indrical Mounts

indrical Mounts

indrical Mounts

indrical Mounts

indrical Mounts

ilicone Gel Mount

ing Mounts

ase Plate Fast

anced Antivibrat

vibrationmounts.com

WWW.VIBRATIONMOUNTS.COM