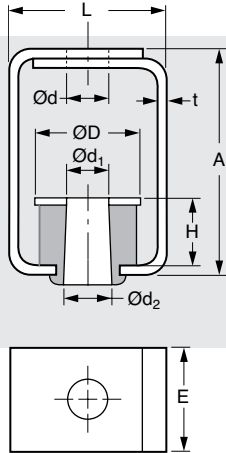




Suspension Mount – Rubber Type

www.vibrationmounts.com Phone: 516.328.3662 Fax: 516.328.3365

- **MATERIAL:** Isolator – Natural Rubber
Housing – Steel, Zinc Plated

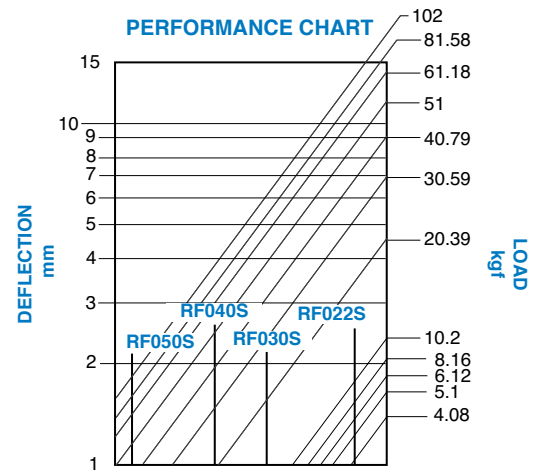


Metric

The projections shown are per ISO convention.

FEATURES:

- Handles wide range of loads from light to heavy.
- Simplifies installation due to the rubber and the housing being preattached.



Catalog Number	A	E	L	H	t	D	d	d ₁	d ₂	Load kgf (lb.)	Spring Rate kgf/cm (lb./in.)
V11Z72MRF022S	70 (2.76)	22 (.87)	32 (1.26)	24 (.94)	2 (.08)	22 (.87)	11 (.43)	10 (.39)	10 (.39)	2 to 15 (4.4 to 33)	60 (336)
V11Z72MRF030S	65 (2.56)	30 (1.18)	44 (1.73)	20 (.79)	2.3 (.09)	30 (1.18)		12 (.47)	14 (.55)	5 to 30 (11 to 66)	140 (784)
V11Z72MRF040S	75 (2.95)	40 (1.58)	55 (2.17)	24 (.94)		3.2 (.13)	40 (1.58)	15 (.59)	14 (.55)	16 (.63)	10 to 60 (22 to 132)
V11Z72MRF050S	80 (3.15)	50 (1.97)	66 (2.60)	22 (.87)	50 (1.97)		50 (1.97)		16 (.63)	20 to 100 (44 to 220)	520 (2912)

NOTE: Dimensions in () are inch.