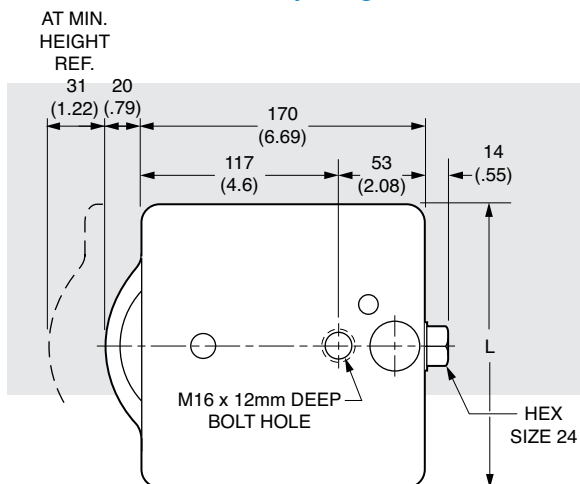


Wedge Leveler – Precision

www.vibrationmounts.com Phone: 516.328.3662 Fax: 516.328.3365

- MATERIAL:** Body – Cast Iron, Painted
Level Adjusting Bolt – Steel, Zinc Plated



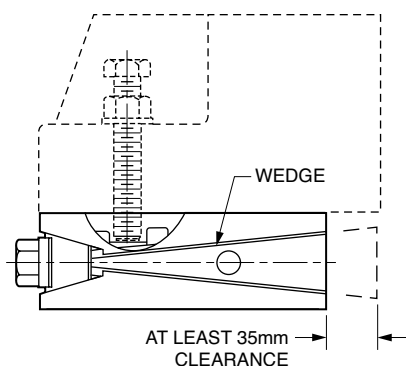
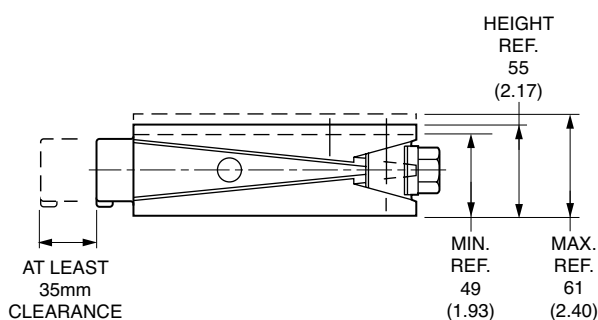
Metric

APPLICATIONS

- FPD PRODUCTION PROCESS SYSTEM
- SEMICONDUCTOR PRODUCTION PROCESS SYSTEM
- PRECISION METAL WORKING MACHINE
- LARGE PRECISION MEASURING EQUIPMENT

FEATURES:

- Two gentle inclines on the wedge produce a large lifting force with small input torque.
- During the level adjustment, the head of the bolt does not move axially. This special design improves the operation and safety of using this product.



CAUTION IN THEIR USE

- Make sure that the machine frame or bed and the floor have sufficient strength, and the equipment is stable and does not have a large unbalanced load.
- Use 24mm wide spanner, box wrench or monkey wrench. For a large load, use tools with long handles.
- During the adjustment, the wedge-shaped middle part moves back and forth. It is necessary to have at least 35mm clearance space behind the wedge leveler.
- Please ensure safe operations during the installation and adjustment.

NOTE: Dimensions in () are inch.

Catalog Number	L	Load Capacity kgf (lb.)	Weight kg (lb.)	
V11Z90MHW1317	130 (5.12)	5608 (12364)	6.7 (14.8)	For general use
V11Z90MHWC1317				For cleanroom applications*
V11Z90MHW1717	170 (6.69)	7138 (15736)	7.9 (17.4)	For general use
V11Z90MHWC1717				For cleanroom applications*

NOTE: Bolt not supplied

*Uses low fluorine emission grease