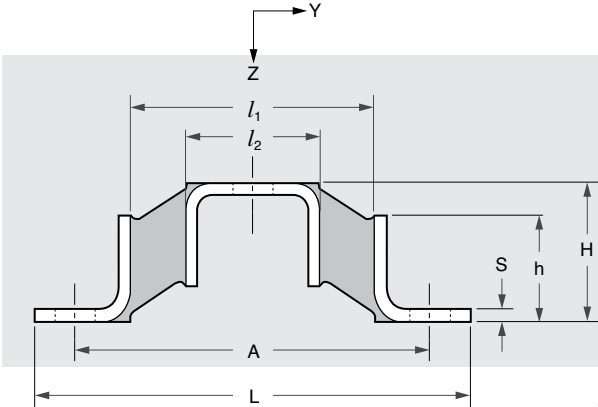




Shear Mounts

www.vibrationmounts.com Phone: 516.328.3662 Fax: 516.328.3365

- **MATERIAL:** Isolator – Natural Rubber
Bracket – Steel, Painted



Metric

APPLICATIONS

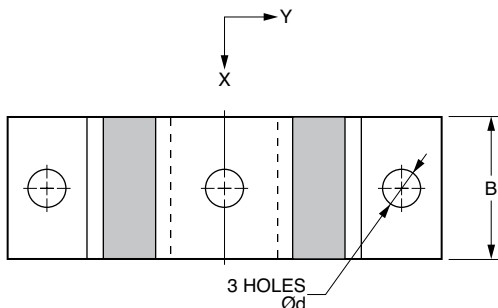
- VIBRATING SCREENS
- VIBRATING CONVEYORS
- COMPRESSORS
- VENTILATORS
- LIGHT ENGINES
- VACUUM PUMPS

FEATURES:

- Can obtain smaller spring constant than round or mound-type vibration mounts and are superior in low-frequency applications.
- Suitable for low rpm vibration. Vibration attenuation is effective above 8.3Hz.
- High-stiffness in the Y-direction.

You can obtain a relatively stable result due to the stiffness in the Y-direction even when a large load is acting in that direction.

- Because the width is narrow and the support height is low, they can be easily mounted in small spaces.



The projections shown are per ISO convention.

Catalog Number	L	A	B	l_1	l_2	S	H	h	d
V11Z49MKE025	76 (3.00)	60 (2.36)	20 (.79)	40 (1.57)	20 (.79)	2.3 (.09)	25 (.98)	17 (.67)	7 (.28)
V11Z49MKE030	105 (4.13)	85 (3.35)	30 (1.18)	50 (1.97)	30 (1.18)	3.2 (.13)	30 (1.18)	22 (.87)	9 (.35)
V11Z49MKE040	135 (5.32)	110 (4.33)	40 (1.57)	70 (2.76)	40 (1.57)	3.2 (.13)	40 (1.57)	30 (1.18)	11 (.43)
V11Z49MKE050	165 (6.50)	135 (5.32)	50 (1.97)	90 (3.54)	50 (1.97)	4.5 (.18)	50 (1.97)	38 (1.50)	14 (.55)
V11Z49MKE060	195 (7.68)	165 (6.50)	60 (2.36)	110 (4.33)	60 (2.36)	6 (.24)	60 (2.36)	44 (1.73)	14 (.55)

Catalog Number	Nominal Load Z direction kgf (lb.)	*Max. Allowable Load			Spring Rate in Z dir. Kz kgf/cm (lb./in.)	Stiffness Ratio	
		Z direction kgf (lb.)	X direction kgf (lb.)	Y direction kgf (lb.)		Kx/Kz	Ky/Kz
V11Z49MKE025	10 (22.0)	15 (33.1)	15 (33.1)	45 (99.2)	45 (252)	1	4
V11Z49MKE030	18 (39.7)	35 (77.2)	35 (77.2)	105 (231.5)	105 (588)	0.72	4
V11Z49MKE040	40 (88.2)	80 (176.4)	80 (176.4)	200 (440.9)	140 (784)	0.83	4.1
V11Z49MKE050	55 (121.3)	110 (242.5)	110 (242.5)	280 (617.3)	150 (840)	0.78	4.2
V11Z49MKE060	75 (165.4)	150 (330.7)	150 (330.7)	370 (815.7)	180 (1008)	0.74	3.8

*Includes axial and radial loads.
NOTE: Dimensions in () are inch.

Base Mounts