

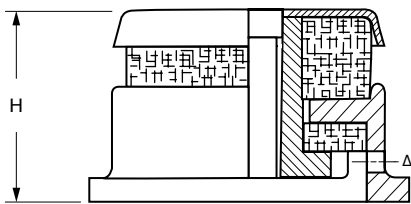
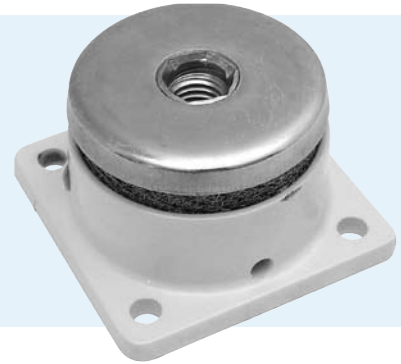
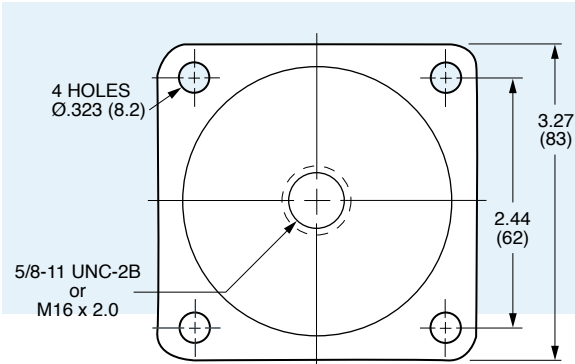


Steel Mesh Mounts – To 1598 lbs.

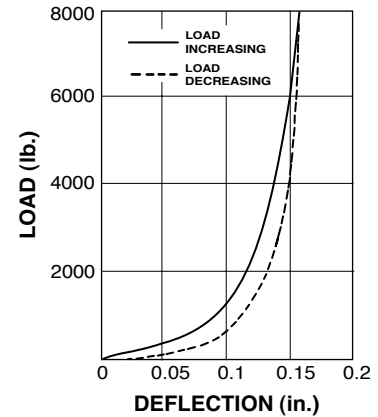
www.vibrationmounts.com Phone: 516.328.3662 Fax: 516.328.3365

- **MATERIAL: Housing** – Machined Casting
Center and Cup Washer are Zinc Plated and Gold Passivated Mild Steel
- **Isolator** – Stainless Steel Mesh

- **CORROSIVE ENVIRONMENT • STAINLESS STEEL MESH**
- **FOR LOADS OF 77 TO 1598 POUNDS (35 TO 725 kgf)**



NOTE: Dimensions in () are mm.



APPLICATIONS

Primarily developed for heavy-duty applications where severe shock forces are encountered, these mounts are especially recommended for vehicle and marine installations where there are high starting torques or reversals of loads. They are capable of withstanding compression loads as high as ten times the static loads and are used for isolating marine fans, mobile engines, generators, instrument consoles and general machine tools such as lathes, milling machines, slotters, broachers, etc.

TEMPERATURE RANGE: -94°F to +347°F (-70°C to +175°C)

Catalog Number		Static Load		Natural Frequency	H - Height	
5/8-11 UNC-2B	M16 x 2.0	lb.	kgf	Hz	Free	Loaded
V10Z27-3021A	V10Z27M3021C	77 – 396	35 – 180	14 – 22	1-31/32 (50)	1-13/16 (46)
V10Z27-3022A	V10Z27M3022C	308 – 793	140 – 360			
V10Z27-3023A	V10Z27M3023C	606 – 1598	275 – 725			

Δ An access hole is provided to be able to pin the center section for assembling the mounting bolt or to remove rusted bolt.



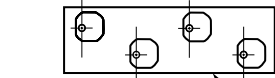
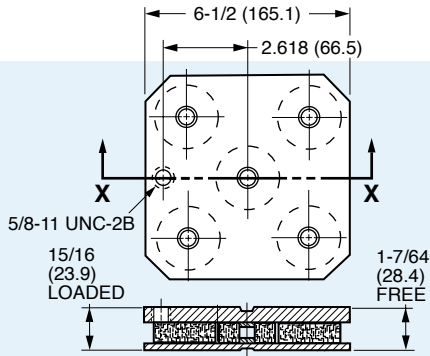
Steel Mesh Mounts – To 20000 lbs.



www.vibrationmounts.com Phone: 516.328.3662 Fax: 516.328.3365

- **MATERIAL:** Mounting Plates – Mild Steel, Painted
Isolators – Knitted Stainless Steel Mesh

- **FOR COMPRESSION LOADS OF 1000 TO 2000 POUNDS (453 TO 9072 kgf)**
- **FREESTANDING • CORROSIVE ENVIRONMENT**



NOTE: Dimensions in () are mm.

APPLICATIONS

- DESIGNED PRINCIPALLY FOR HEAVY-DUTY PUNCH AND
- PANEL PRESSES
- LARGE MACHINE TOOLS
- ROCK CRUSHERS

FLOOR MOUNTING

To support heavy loads, the mounts are grouped together on a spreader plate. The spreader plate should be made the same size as the floor bearing area of the base. Fasten the mounts to the spreader plate by the 5/8 tapped hole provided, then fasten the spreader to the machine base.

EXAMPLE:

Total Weight of Machine = 65 TONS

$$\frac{\text{Machine Weight}}{\text{Capacity of Mount}} = \frac{65}{9} = 7.22 \text{ (use 8 mounts)}$$

Catalog Number	Static Load Range	
	lb.	kgf
V10Z33-1133-1	1000 – 2000	453 – 907
V10Z33-1133-2	2000 – 5000	907 – 2268
V10Z33-1133-3	5000 – 10000	2268 – 4536
V10Z33-1133-4	10000 – 20000	4536 – 9072

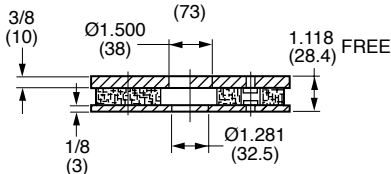
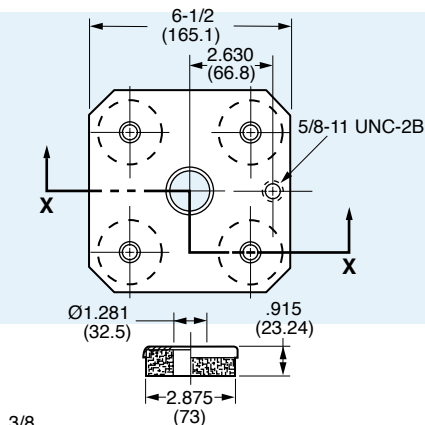


Base Mounts

Steel Mesh Mounts – To 16000 lbs.

- **MATERIAL:** Mounting Plates – Mild Steel, Painted
Isolators – Knitted Stainless Steel Mesh

- **FOR COMPRESSION LOADS OF 800 TO 16000 POUNDS (363 TO 7257 kgf)**
- **FLOOR MOUNTED • CORROSIVE ENVIRONMENT**



SECTION X-X

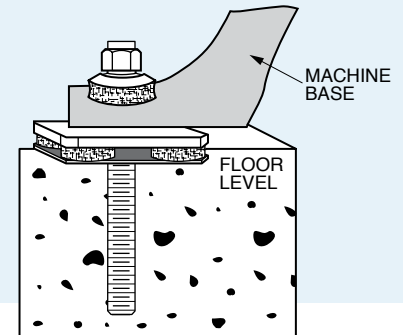
NOTE: Dimensions in () are mm.

APPLICATIONS

Designed for heavy machine tools, this low profile mount serves the dual purpose of effectively isolating machine vibration while preventing movement by holding firmly on its base.

FLOOR MOUNTING

It is important that the stud is firmly fixed into the floor before the machine is bolted down. In the illustration, Rawbolt "stud-ding" has been used, but foundation anchoring hardware is not provided with the mount. For use on level surfaces only. Use 1.0 (25.4) maximum diameter anchoring studs.



Catalog Number	Static Load Range	
	lb.	kgf
V10Z34-1139-1	800 – 1600	363 – 726
V10Z34-1139-2	1600 – 4000	726 – 1814
V10Z34-1139-3	4000 – 8000	1814 – 3628
V10Z34-1139-4	8000 – 16000	3628 – 7257