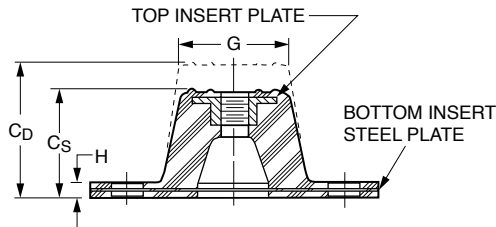
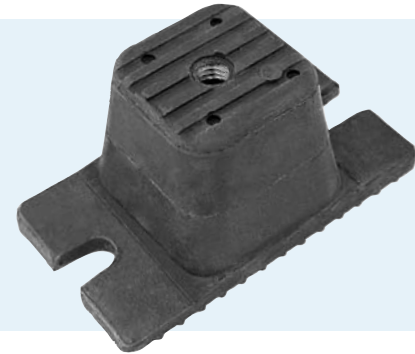
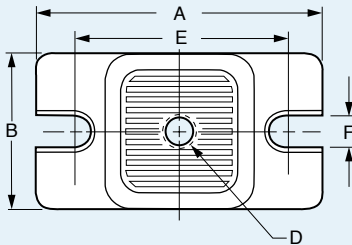




Rectangular Base Mounts

www.vibrationmounts.com Phone: 516.328.3662 Fax: 516.328.3365

- **MATERIAL:** Plates – Steel
Isolator – Oil-Resistant Neoprene or Durulene™
- **FOR LOADS OF 110 TO 4000 POUNDS (49.9 TO 1814.4 kgf)**



APPLICATIONS

- INDUSTRIAL
- AIR CONDITIONING
- BUSINESS MACHINES
- **CHOOSE DURULENE FOR THE FOLLOWING**
- ROOFTOP – Extreme heat or cold, direct sunlight
- INDOOR/OUTDOOR – Severe weather
- OZONE-EMITTING ELECTRICAL EQUIPMENT

FEATURES:

- Threaded plate molded into mounting
- Nonskid base & top surface

TEMPERATURE RANGE: Neoprene – -40°F to +180°F (-40°C to +82.2°C)
Durulene™ – -65°F to +250°F (-53.9°C to +121.1°C)

Catalog Number*		Graph Ref. ^Δ	Rated Load lb. (kgf)	A	B	Height C		D	E	F	G	H	Max. Static Deflection	
Neoprene	Durulene™					Standard Cs	Double Cd						Standard	Double
§ V10Z53-FB0110 □	—	AS AD	110 (49.9)										.40 (10.16)	
§ V10Z53-FB0260S	—	CS	260 (117.9)	3-3/4 (95.3)	2-1/8 (54)	1-1/8 (28.6)	1-7/8 (47.6)	3/8-16	3 (76.2)	3/8 (9.5)	1-9/16 (39.7)	1/4 (6.4)	.20 (5.08)	—
§ V10Z53-FB0470 □	—	DS DD	470 (213.2)										.40 (10.16)	
§ V10Z53-FC0500S	—	FS	500 (226.8)											
§ V10Z53-FC0720S	—	GS	720 (326.6)	5 (127)	3-1/16 (77.8)	1-5/8 (41.3)	—	1/2-13	4 (101.6)	9/16 (14.3)	2-5/16 (58.7)	3/8 (9.5)	.25 (6.35)	—
§ V10Z53-FC1120 □	—	HS HD	1120 (508)				2-3/4 (69.9)							.50 (12.7)
V10Z53-FD1500 □	V10Z53-FD1500 □ D	IS ID	1500 (680.4)											
V10Z53-FD2250 □	V10Z53-FD2250 □ D	JS JD	2250 (1020.6)	6-1/4 (158.8)	4-5/8 (117.5)	1-5/8 (41.3)	2-3/4 (69.9)	1/2-13	5 (127)	9/16 (14.3)	3 (76.2)	3/8 (9.5)	.25 (6.35)	.50 (12.7)
V10Z53-FD3000 □	V10Z53-FD3000 □ D	KS KD	3000 (1360.8)											
V10Z53-FD4000 □	V10Z53-FD4000 □ D	LS LD	4000 (1814.4)											

* To complete the Catalog Number, specify:

□ S for Standard Deflection
or □ D for Double Deflection

Additional load ratings available on special order.

NOTE: Dimensions in () are mm.

Δ For Load Deflection Graphs see page 2-15

§ To be discontinued when present stock is depleted.

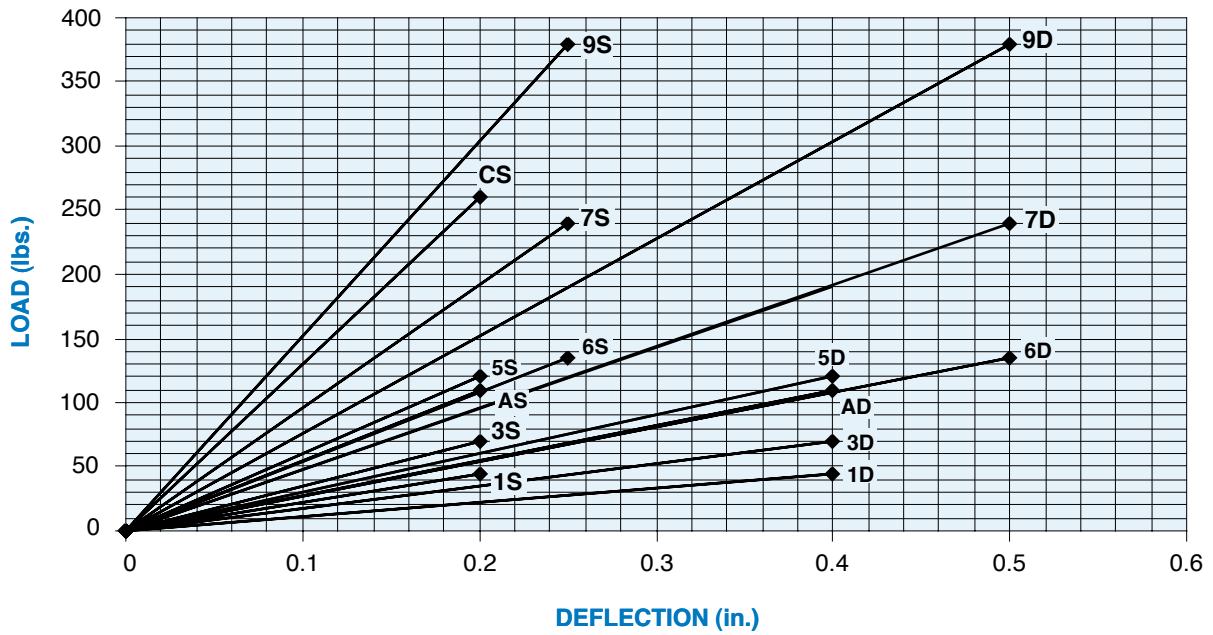


Load Deflection for Base Mounts

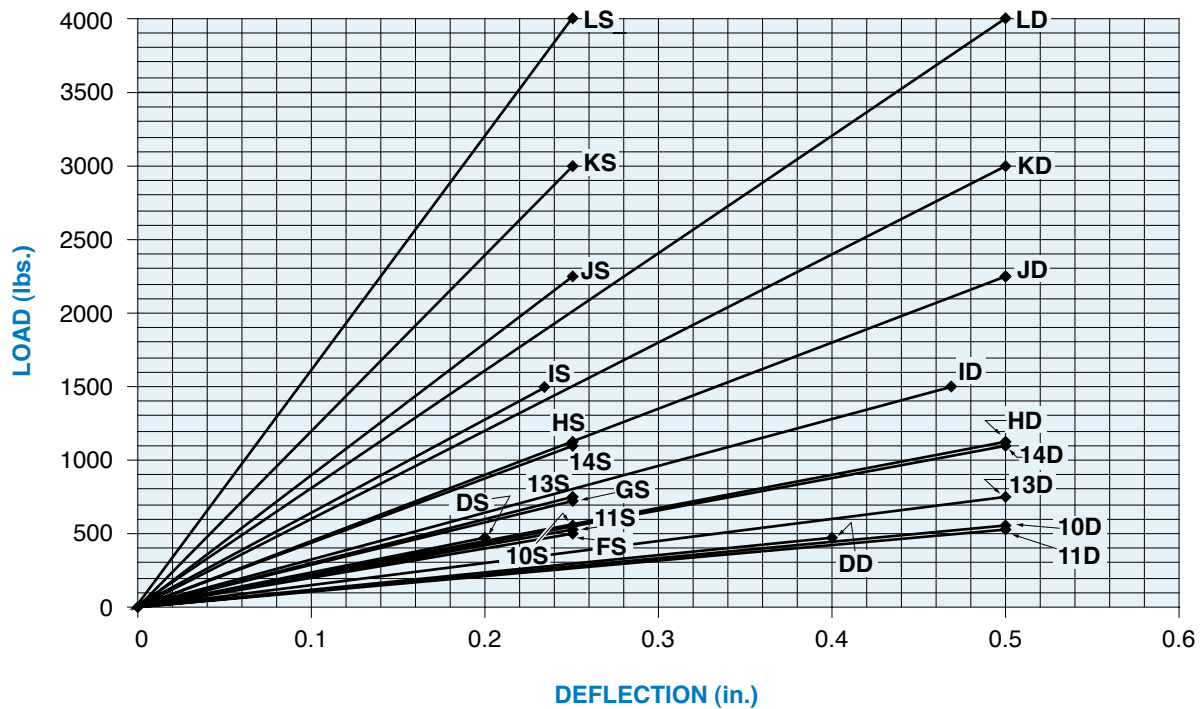
www.vibrationmounts.com Phone: 516.328.3662 Fax: 516.328.3365

For Catalog Numbers V10Z52-... and V10Z53-... on pages 2-13 and 2-14.

LOAD VS. DEFLECTION



LOAD VS. DEFLECTION




 Base Mounts