

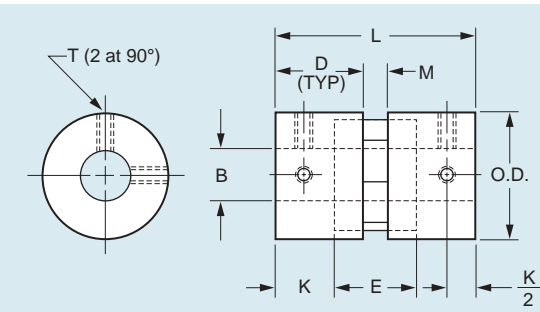


Couplings – Flexible – Spline Type

www.vibrationmounts.com Phone: 516.328.3662 Fax: 516.328.3365

- **MATERIAL:** Spline – Hytrel or Polyurethane
Hub – Zinc Alloy Die Casting (Sizes 16, 20, 25)
– Sintered Metal (Size 32)

- **HYTREL SPLINE FOR HEAVY-DUTY**



FEATURES:

- High rpm
- Electrically Isolated
- Dampens Shock & Vibration
- No Lubrication

MISALIGNMENT COMPENSATION

- Max. Angular Offset – 2°
- Max. Lateral Offset – .008 (0.2)

TEMPERATURE RANGE:

- Hytrel -22°F to +212°F (-30°C to +100°C)
- Polyurethane -4°F to +140°F (-20°C to +60°C)

Coupling Size	Rated Torque lb. in. (N • m)		Max. rpm
	Hytrel	Polyurethane	
16	6.6 (0.75)	4.4 (0.5)	24000
20	13.3 (1.5)	8.8 (1)	19000
25	20.4 (2.3)	13.3 (1.5)	15000
32	39.8 (4.5)	26.6 (3)	12000

NOTE: Dimensions in () are mm.

Catalog Number ^Δ			O.D.	B Bore +.001 -.000 (+0.025 0)	L Length	D	K	E Spline Length	M	Spline Bore	T Set Screw	Max. Bore **
Complete Coupling	Hub Only	Spline Only										
V 5Z2□-1608	V 5D28-1608	V 5R2□-16	5/8 (15.9)	.250 (6.35)	1-1/16 (27)	15/32 (11.9)	5/16 (7.9)	7/16 (11.1)	1/8 (3.2)	15/64 (6)	#4-40	.315 (8)
V 5Z2□-2008	V 5D28-2008	V 5R2□-20	25/32 (19.8)	.250 (6.35) .375 (9.53)	1-11/32 (34.1)	19/32 (15.1)	25/64 (9.9)	35/64 (13.9)	5/32 (4)	5/16 (7.9)		.394 (10)
V 5Z2□-2012	V 5D28-2012	V 5R2□-25	1 (25.4)	.250 (6.35)	1-39/64 (40.9)	45/64 (17.9)	15/32 (11.9)	21/32 (16.7)	13/64 (5.2)	25/64 (9.9)	#6-32	.472 (12)
V 5Z2□-2508	V 5D28-2508			.375 (9.53)								
V 5Z2□-2512	V 5D28-2512	V 5R2□-32	1-1/4 (31.8)	.375 (9.53)	1-57/64 (48)	53/64 (21)	9/16 (14.3)	25/32 (19.8)	15/64 (6)	15/32 (11.9)	#6-32	.591 (15)
V 5Z2□-3212	V 5D28-3212			.500 (12.7)								
V 5Z2□-3216	V 5D28-3216											

**Other bore diameter combinations and bore sizes not exceeding the maximum listed above are available on special order.

^ΔTo complete the Catalog Number, specify:

- 8 for a Polyurethane Spline
- 9 for a Hytrel Spline

Example: For a Complete Coupling with a Polyurethane Spline, specify Catalog Number V 5Z28-2008.

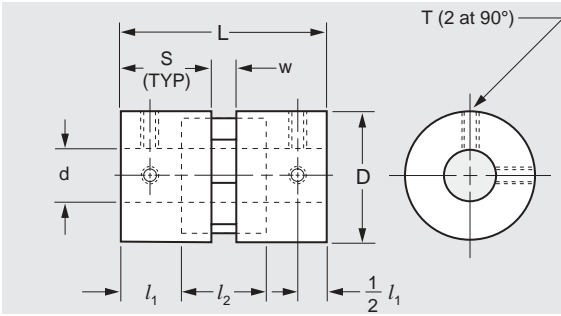


Couplings – Flexible – Spline Type

www.vibrationmounts.com Phone: 516.328.3662 Fax: 516.328.3365

- **MATERIAL:** Spline – Hytrel or Polyurethane
Hub – Zinc Alloy Die Casting (Sizes 16, 20, 25)
– Sintered Metal (Size 32)

- **HYTREL SPLINE FOR HIGH-TORQUE AND HIGH-TEMPERATURE APPLICATIONS**



The projections are shown per ISO convention.

Metric

FEATURES:

- High rpm
- Electrically Isolated
- Dampens Shock & Vibration
- Blind Assembly
- No Lubrication

MISALIGNMENT COMPENSATION

- Max. Angular Offset – 2°
- Max. Lateral Offset – 0.2 (.008)

TEMPERATURE RANGE:

- Hytrel -30°C to +100°C (-22°F to +212°F)
- Polyurethane -20°C to +60°C (-4°F to +140°F)

Coupling Size	Rated Torque N • m (lb. in.)		Max. rpm
	Hytrel	Polyurethane	
16	0.75 (6.6)	0.5 (4.4)	24000
20	1.5 (13.3)	1 (8.8)	19000
25	2.3 (20.4)	1.5 (13.3)	15000
32	4.5 (39.8)	3 (26.6)	12000

NOTE: Dimensions in () are inch.

Catalog Number ^Δ			D	d* Bore H8	L	S	l ₁	l ₂	w	Spline Bore	T Set Screw	Max. Bore **
Complete Coupling	Hub Only	Spline Only										
V 5Z2□M1603	V 5D28M1603	V 5R2□M16	16 (.63)	3 (.12)	27 (1.06)	12 (.47)	8 (.31)	11 (.43)	3 (.12)	6 (.24)	M3	8 (.31)
V 5Z2□M1604	V 5D28M1604			4 (.16)								
V 5Z2□M1605	V 5D28M1605			5 (.20)								
V 5Z2□M1606	V 5D28M1606			6 (.24)								
V 5Z2□M1608	V 5D28M1608	8 (.31)										
V 5Z2□M2005	V 5D28M2005	V 5R2□M20	20 (.79)	5 (.20)	34 (1.34)	15 (.59)	10 (.39)	14 (.55)	4 (.16)	8 (.31)	M3	10 (.39)
V 5Z2□M2006	V 5D28M2006			6 (.24)								
V 5Z2□M2008	V 5D28M2008			8 (.31)								
V 5Z2□M2010	V 5D28M2010			10 (.39)								
V 5Z2□M2506	V 5D28M2506	V 5R2□M25	25 (.98)	6 (.24)	41 (1.61)	18 (.71)	12 (.47)	17 (.67)	5 (.20)	10 (.39)	M4	12 (.47)
V 5Z2□M2508	V 5D28M2508			8 (.31)								
V 5Z2□M2510	V 5D28M2510			10 (.39)								
V 5Z2□M2512	V 5D28M2512			12 (.47)								
V 5Z2□M3208	V 5D28M3208	V 5R2□M32	32 (1.26)	8 (.31)	48 (1.89)	21 (.83)	14 (.55)	20 (.79)	6 (.24)	12 (.47)	M4	15 (.59)
V 5Z2□M3210	V 5D28M3210			10 (.39)								
V 5Z2□M3212	V 5D28M3212			12 (.47)								
V 5Z2□M3214	V 5D28M3214			14 (.55)								

*Bore Tolerance:
 3 mm +0.014 (.12 +.0006)
 4, 5 & 6 mm +0.018 (.16, .20 & .24 +.0007)
 8 & 10 mm +0.022 (.31 & .39 +.0009)
 12 & 14 mm +0.027 (.47 & .55 +.001)

**Other bore diameter combinations and bore sizes not exceeding the maximum listed above are available on special order.

^ΔTo complete the Catalog Number, specify:

- 8 for a Polyurethane Spline
- 9 for a Hytrel Spline

Example: For a Complete Coupling with a Hytrel Spline, specify Catalog Number V 5Z29M1604

SECTION 9