



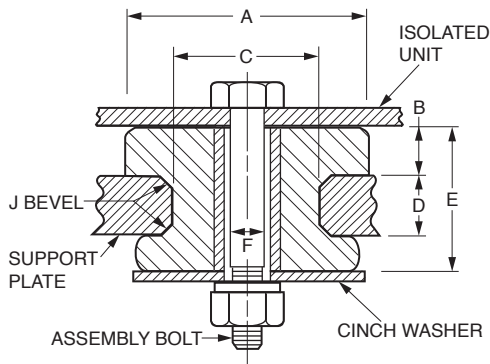
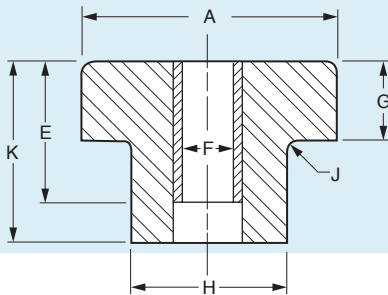
Bolt Mounts – Solo Unitized

www.vibrationmounts.com Phone: 516.328.3662 Fax: 516.328.3365

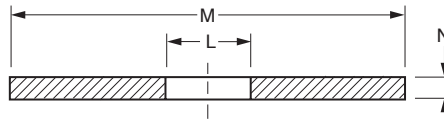
• **MATERIAL:** Outer Body – Natural Rubber Load-Carrying Member
Spacer – Steel, Tubular Rolled

• **SOLO TYPE**
• **FOR LOADS OF 60 TO 1300 POUNDS (27.2 TO 590 kgf)**

PREASSEMBLY DIMENSIONS



SOLO MOUNTING



CINCH WASHER
RECOMMENDED DIMENSIONS

INSTALLATION:

1. Lubricate mount and socket with water or rubber lubricant.
2. Insert into socket, hand rotate with axial force.
3. If necessary, use driving bolt. Care must be taken that the driving bolt does not overhang the steel sleeve O.D.

SELECTION CRITERIA:

Calculate static load.
Select a mount of equal or greater capacity. For dynamic load greater than 3X static load, select next larger size.

Catalog Number*	Nominal Load Rating Axial lb. (kgf)	Nominal Deflection Rating Axial in. (mm)	A	B	C	D	E	F	G	H	J	K	L	M	N (min)
V10Z42-1010	60 (27.2)	.010 (0.25)	1.00 (25.4)	.17 (4.3)	.75 (19.1)	.13 (3.3)	.44 (11.2)	.38 (9.7)	.18 (4.6)	.77 (19.6)	.03 (0.8)	.55 (14)	.38 (9.7)	1.00 (25.4)	.09 (2.3)
V10Z42-2000	125 (56.7)	.018 (0.46)	1.09 (27.7)	.19 (4.8)	.75 (19.1)	.31 (7.9)	.69 (17.5)	.38 (9.7)	.21 (5.3)	.78 (19.8)	.03 (0.8)	.96 (24.4)	.38 (9.7)	1.12 (28.4)	.09 (2.3)
V10Z42-4000	200 (90.7)	.015 (0.38)	2.00 (50.8)	.48 (12.2)	1.25 (31.8)	.62 (15.7)	1.38 (35.1)	.52 (13.2)	.52 (13.2)	1.32 (33.5)	.06 (1.5)	2.18 (55.4)	.52 (13.2)	2.00 (50.8)	.12 (3)
V10Z42-4040		.035 (0.89)		.46 (11.7)		.25 (6.4)	1.00 (25.4)	.64 (16.3)				1.30 (33)	.38 (9.7)		
V10Z42-4050		.030 (0.76)		.46 (11.7)		.25 (6.4)	1.00 (25.4)	.64 (16.3)				1.30 (33)	.64 (16.3)		
V10Z42-5000	425 (192.8)	.020 (0.51)	2.50 (63.5)	.56 (14.2)	1.50 (38.1)	.75 (19.1)	1.71 (43.4)	.64 (16.3)	.62 (15.7)	1.50 (38.1)	.06 (1.5)	2.20 (55.9)	.64 (16.3)	2.50 (63.5)	.15 (3.8)
V10Z42-6000	500 (226.8)	.030 (0.76)	3.00 (76.2)	.71 (18)	1.81 (46)	.93 (23.6)	2.00 (50.8)	.64 (16.3)	.81 (20.6)	1.81 (46)	.12 (3)	2.42 (61.5)	.64 (16.3)	3.00 (76.2)	.19 (4.8)
V10Z42-6020				.76 (19.3)		.50 (12.7)	1.56 (39.6)	.64 (16.3)				1.97 (50)			
V10Z42-7000	900 (408.2)	.075 (1.91)	3.75 (76.2)	.94 (23.9)	2.00 (50.8)	.75 (19.1)	2.12 (53.8)	.77 (19.6)	1.16 (29.5)	2.06 (52.3)	.09 (2.3)	2.66 (67.6)	.77 (19.6)	3.70 (94)	.25 (6.4)
V10Z42-8020	1300 (590)	.030 (0.76)	4.53 (115.1)	1.12 (28.4)	2.75 (69.9)	1.75 (44.5)	3.37 (85.6)	1.06 (26.9)	1.22 (31)	2.75 (69.9)	.12 (3)	4.34 (110.2)	1.06 (26.9)	4.50 (114.3)	.25 (6.4)



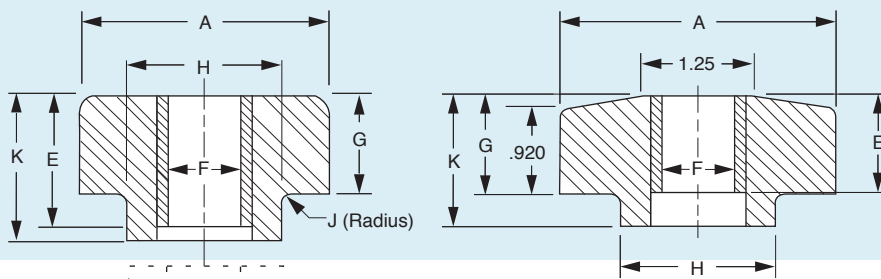
Bolt Mounts – Tandem Unitized

www.vibrationmounts.com Phone: 516.328.3662 Fax: 516.328.3365

• **MATERIAL:** Outer Body – Natural Rubber Load-Carrying Member
Spacer – Steel, Tubular Rolled

• **TANDEM TYPE**
• **FOR LOADS OF 150 TO 900 POUNDS (68 TO 408.2 kgf)**

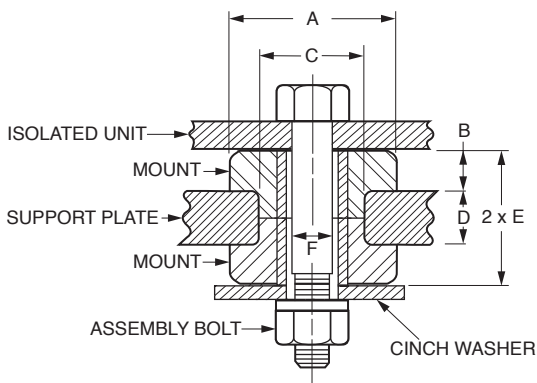
PREASSEMBLY DIMENSIONS



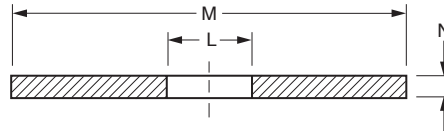
ΔV10Z42-A7010



SHOWN FOR
MOUNTING
ORIENTATION



TANDEM MOUNTING



CINCH WASHER
RECOMMENDED DIMENSIONS

INSTALLATION:

1. Lubricate mount and socket with water or rubber lubricant.
2. Insert into socket, hand rotate with axial force.
3. If necessary, use driving bolt. Care must be taken that the driving bolt does not overhang the steel sleeve O.D.

SELECTION CRITERIA:

Calculate static load. Select a mount of equal or greater capacity. For dynamic loads greater than 3X static load, select next larger size.

Catalog Number	Nominal Load Rating Axial lb. (kgf)	Nominal Deflection Rating Axial in. (mm)	A	B	C	D	E	F	G	H	J	K	L	M	N (min)
V10Z42-A3010	150 (68)	.010 (0.25)	1.78 (45.2)	.38 (9.7)	1.12 (28.4)	.38 (9.7)	.59 (15)	.52 (13.2)	.43 (10.9)	1.15 (29.2)	—	.63 (16)	.52 (13.2)	1.75 (44.5)	.10 (2.5)
V10Z42-A5020	425 (192.8)	.015 (0.38)	2.58 (65.5)	.87 (22.1)	1.50 (38.1)	.50 (12.7)	1.05 (26.7)	.64 (16.3)	.92 (23.4)	1.58 (40.1)	.06 (1.5)	1.17 (23.7)	.64 (16.3)	2.50 (63.5)	.15 (3.8)
*V10Z42-A6010	500 (226.8)	.018 (0.46)	3.00 (76.2)	.75 (19.1)	1.81 (46)	.75 (19.1)	1.16 (29.5)	.64 (16.3)	.79 (20.1)	1.87 (47.5)	.06 (1.5)	1.19 (30.2)	.64 (16.3)	3.00 (76.2)	.19 (4.8)
ΔV10Z42-A7010	900 (408.2)	.080 (2.03)	3.75 (95.3)	.74 (18.8)	2.25 (57.2)	.75 (19.1)	1.13 (28.7)	.77 (19.6)	1.14 (28.9)	2.28 (57.9)	—	1.52 (38.6)	.77 (19.6)	4.00 (101.6)	.25 (6.4)

*Chamfer at one end 22.50° x .20

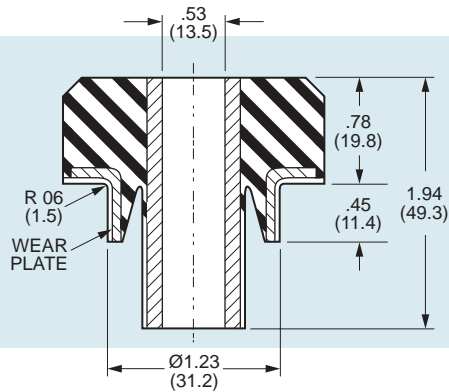


Bolt Mounts – Ring and Bushing Type

www.vibrationmounts.com Phone: 516.328.3662 Fax: 516.328.3365

- **MATERIAL:** Isolator – Neoprene
Wear Plate & Sleeve – Carbon Steel,
Rust-Resistant Coating

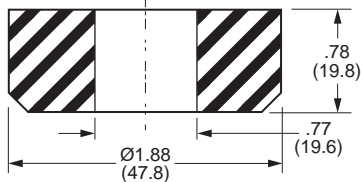
- **WEAR PLATE DESIGN IMPROVES FATIGUE LIFE AND WEAR RESISTANCE**
- **RESISTS OILS, OZONE AND MOST SOLVENTS**
- **FAIL-SAFE DESIGN WITH SNUBBING WASHER**



New

APPLICATIONS

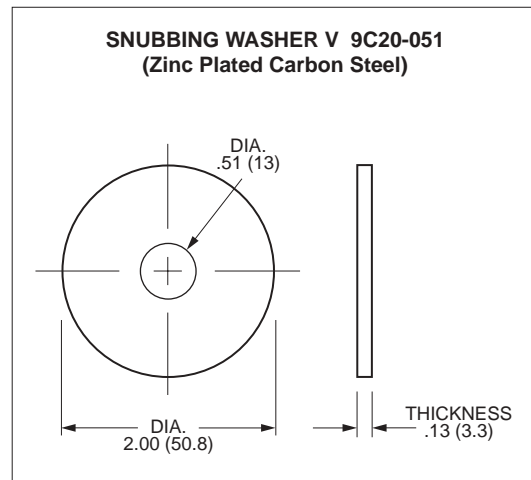
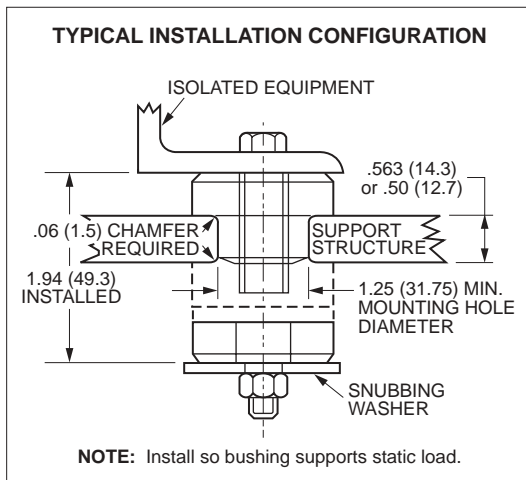
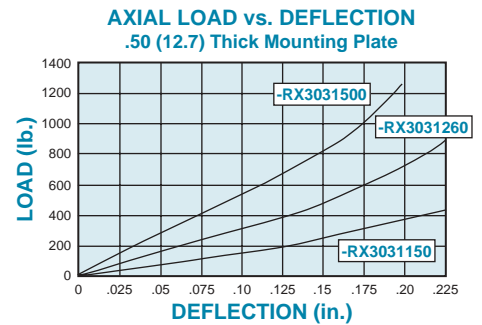
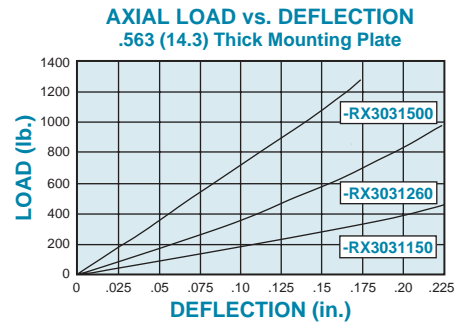
- SMALL ENGINES
- GENERATORS
- PUMPS
- RADIATORS
- OPERATOR CABS IN SEVERE ENVIRONMENTS



NOTE: Dimensions in () are mm.

TEMPERATURE RANGE: -20°F to +180°F (-28.9°C to +82.2°C)

Catalog Number	Max. Load lb. (N)			
	Thick Mounting Plate Inch (mm) .563 (14.3)		Thin Mounting Plate Inch (mm) .50 (12.7)	
	Axial	Radial	Axial	Radial
V10Z82-RX3031150	150 (667)	75 (333)	80 (355)	40 (177)
V10Z82-RX3031260	260 (1156)	130 (578)	160 (711)	80 (355)
V10Z82-RX3031500	500 (2224)	250 (1112)	300 (1334)	150 (667)

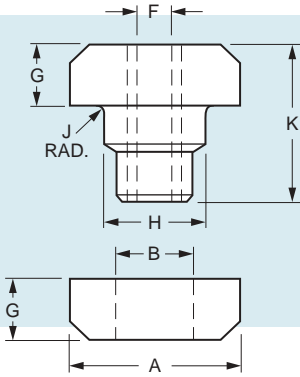




Bolt Mounts – Ring and Bushing Type

www.vibrationmounts.com Phone: 516.328.3662 Fax: 516.328.3365

- **MATERIAL:** Isolator – Neoprene
Sleeve – Carbon Steel
Rust-Resistant Coating
- **FULL REBOUND PROTECTION**
- **STRUCTURE-BORNE NOISE ATTENUATION**
- **RESISTS OILS, OZONE AND MOST SOLVENTS**
- **FAIL-SAFE DESIGN WITH SNUBBING WASHER**



APPLICATIONS

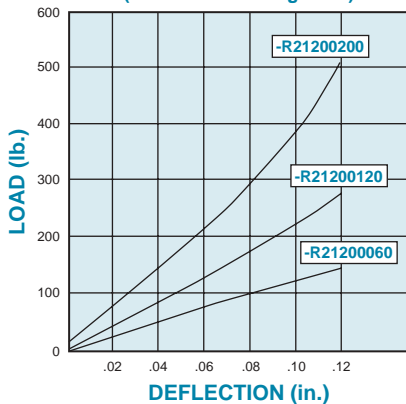
- HIGHWAY AND OFF-HIGHWAY VEHICLES: ISOLATE ENGINES, CABS, RADIATORS, BATTERY BOXES, FUEL TANKS AND ACCESSORIES
- MOTOR GENERATORS AND COMPRESSORS
- PUMPS AND CENTRIFUGES
- MARINE EQUIPMENT AND POWER PLANTS
- HVAC EQUIPMENT
- PORTABLE EQUIPMENT AND MACHINERY
- OFFICE EQUIPMENT/COMPUTERS



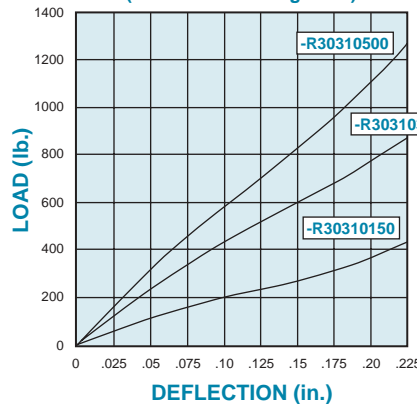
New

SECTION 7

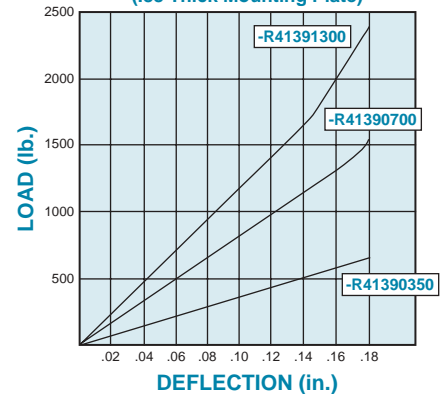
AXIAL LOAD vs. DEFLECTION
(.38 Thick Mounting Plate)



AXIAL LOAD vs. DEFLECTION
(.56 Thick Mounting Plate)



AXIAL LOAD vs. DEFLECTION
(.88 Thick Mounting Plate)



TEMPERATURE RANGE: -20°F to +180°F (-28.9°C to +82.2°C)

Catalog Number	A in. (mm)	B in. (mm)	F in. (mm)	G in. (mm)	H in. (mm)	K in. (mm)	J in. (mm)	Durometer	Axial Static Load, Max. lb. (N)	Radial Static Load, Max. lb. (N)	Mounting Plate Thickness in. (mm)	Natural Frequency (Max. Load) Hz (ref)
V10Z82-R21200060	1.31 (33.3)	.59 (15)	.39 (9.9)	.48 (12.2)	.79 (20.1)	1.25 (31.8)	.04 (1)	40	60 (266)	30 (133)	.38 (9.7)	15
V10Z82-R21200120								56	120 (533)	40 (177)		
V10Z82-R21200200								70	200 (889)	50 (222)		
V10Z82-R30310150	1.88 (47.8)	.77 (19.6)	.53 (13.5)	.78 (19.8)	1.3 (33)	1.94 (49.3)	.06 (1.5)	48	150 (667)	60 (266)	.56 (14.2)	12
V10Z82-R30310300								64	300 (1334)	120 (533)		
V10Z82-R30310500								68	500 (2224)	200 (889)		
V10Z82-R41390350	2.55 (64.8)	1.03 (26.2)	.65 (16.5)	.9 (22.9)	1.58 (40.1)	2.43 (61.7)	.09 (2.3)	40	350 (1556)	140 (622)	.88 (22.4)	12
V10Z82-R41390700								56	700 (3113)	300 (1334)		
V10Z82-R41391300								70	1300 (5782)	650 (2891)		

NOTE: For Snubbing Washers and Installation Configurations see page 7-13

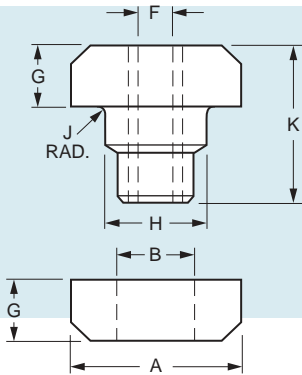


Bolt Mounts – Ring and Bushing Type

www.vibrationmounts.com Phone: 516.328.3662 Fax: 516.328.3365

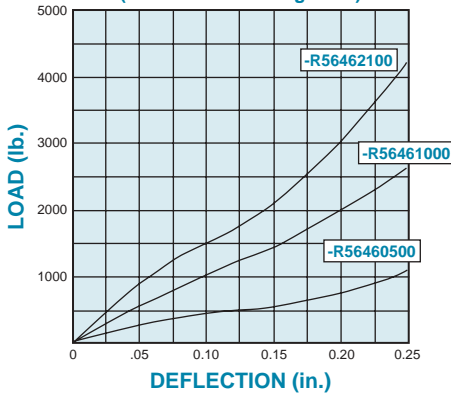
- **MATERIAL:** Isolator – Neoprene
Sleeve – Carbon Steel, Rust-Resistant Coating
- **FULL REBOUND PROTECTION**
- **STRUCTURE-BORNE NOISE ATTENUATION**
- **RESISTS OILS, OZONE AND MOST SOLVENTS**
- **FAIL-SAFE DESIGN WITH SNUBBING WASHER**

New

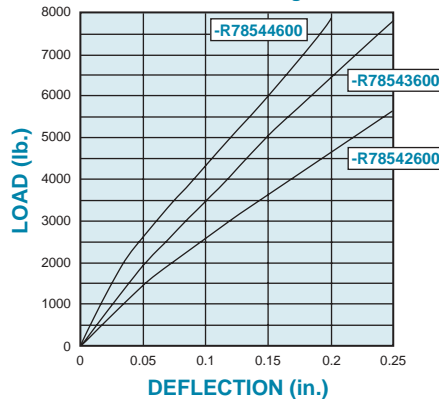


SECTION 7

AXIAL LOAD vs. DEFLECTION
(1.12 Thick Mounting Plate)



AXIAL LOAD vs. DEFLECTION
1.25 Thick Mounting Plate



APPLICATIONS

- HIGHWAY AND OFF-HIGHWAY VEHICLES: ISOLATE ENGINES, CABS, RADIATORS, BATTERY BOXES, FUEL TANKS AND ACCESSORIES
- MOTOR GENERATORS AND COMPRESSORS
- PUMPS AND CENTRIFUGES
- MARINE EQUIPMENT AND POWER PLANTS
- HVAC EQUIPMENT
- PORTABLE EQUIPMENT AND MACHINERY
- OFFICE EQUIPMENT/COMPUTERS

TEMPERATURE RANGE: -20°F to +180°F (-28.9°C to +82.2°C)

Catalog Number	A in. (mm)	B in. (mm)	F in. (mm)	G in. (mm)	H in. (mm)	K in. (mm)	J in. (mm)	Durometer	Axial Static Load, Max. lb. (N)	Radial Static Load, Max. lb. (N)	Mounting Plate Thickness in. (mm)	Natural Frequency (Max. Load) Hz (ref)
V10Z82-R56460500	3.5 (88.9)	1.41 (35.8)	.93 (23.6)	1 (25.4)	2.3 (58.4)	2.88 (73.2)	.12 (3)	40	500 (2224)	200 (889)	1.12 (28.4)	10
60								1000 (4448)	400 (1779)			
70								2100 (9341)	900 (4003)			
V10Z82-R78542600	4.88 (124)	1.86 (47.2)	1.063 (27)	1.25 (31.8)	2.55 (64.8)	3.38 (85.9)		60	2600 (11565)	1000 (4448)	1.25 (31.8)	
68								3600 (16013)	1450 (6449)			
74								4600 (20461)	1900 (8451)			

NOTE: For Snubbing Washers and Installation Configurations see next page.



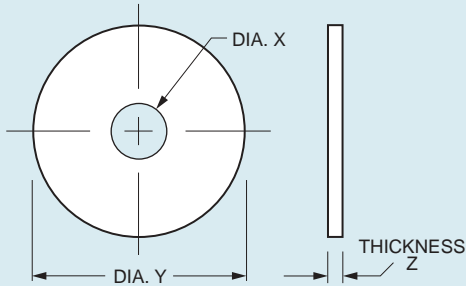
Bolt Mounts – Washers and Installation

www.vibrationmounts.com Phone: 516.328.3662 Fax: 516.328.3365

• MATERIAL: Carbon Steel - Zinc Plated

Snubbing Washers

New

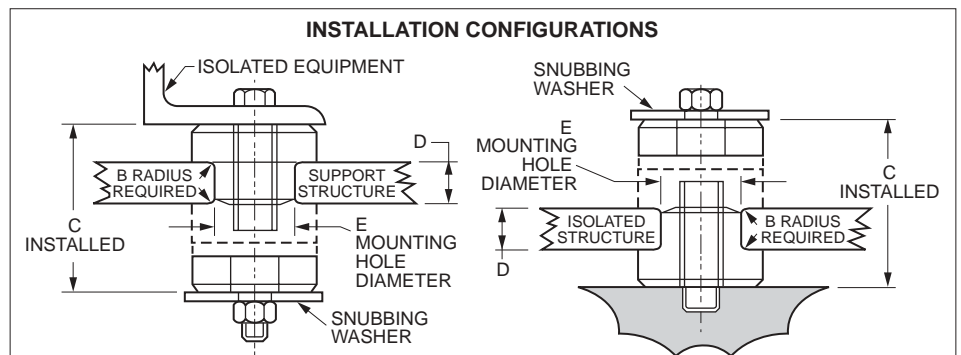


SECTION 7

Catalog Number	For Series V10Z82-	Dia. X in. (mm)	Dia. Y in. (mm)	Thickness Z in. (mm)
V 9C20-040	R21	.40 (10.2)	1.56 (39.6)	.09 (2.3)
V 9C20-051	R30 & RX30	.51 (13)	2.00 (50.8)	.13 (3.3)
V 9C20-066	R41	.66 (16.8)	2.81 (71.4)	.19 (4.8)
V 9C20-094	R56	.94 (23.9)	3.88 (98.6)	.25 (6.4)
V 9C20-106	R78	1.06 (26.9)	5.25 (133.4)	.38 (9.7)



For Bolt Mounts, see previous pages.



Installation Dimensions

Mount Series	B in. (mm)	C in. (mm)	D in. (mm)	E in. (mm)
V10Z82-R21	.04 (1.02)	1.25 (31.8)	.38 (9.7)	.75 (19.1)
V10Z82-R30	.06 (1.52)	1.94 (49.3)	.56 (14.2)	1.25 (31.8)
V10Z82-R41	.09 (2.29)	2.43 (61.7)	.88 (22.4)	1.50 (38.1)
V10Z82-R56	.12 (3.05)	2.88 (73.2)	1.12 (28.4)	2.25 (57.2)
V10Z82-R78	.12 (3.05)	3.38 (85.9)	1.25 (31.8)	2.50 (63.5)



Bolt Mounts – Silicone Gel Type

www.vibrationmounts.com Phone: 516.328.3662 Fax: 516.328.3365

• MATERIAL: Collar – Brass
Bushing – Silicone Gel

• PROTECTS FRAGILE SUBJECTS FROM MICROVIBRATIONS
AND LIGHT SHOCKS

New

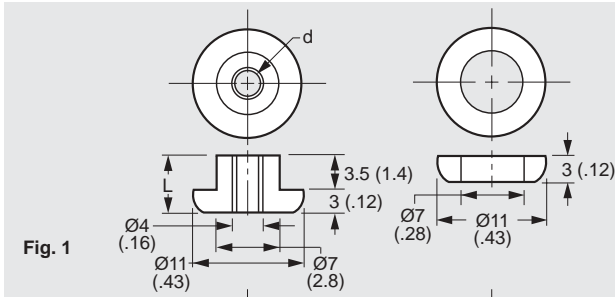


Fig. 1

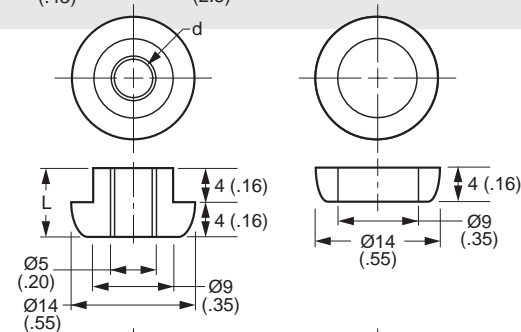


Fig. 2

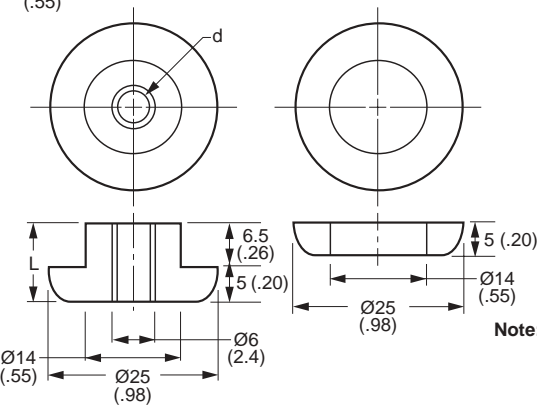
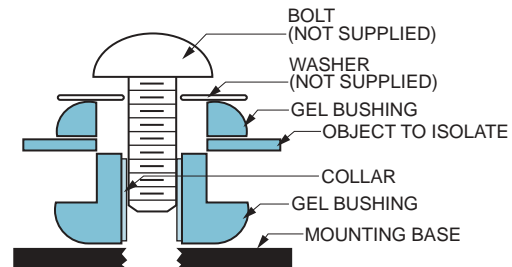


Fig. 3



Metric

SECTION 7



INSTALLATION DIAGRAM

Note: Dimensions in () are inch.

TEMPERATURE RANGE: -40°C to +200°C (-40°F to +392°F)

Catalog Number	Fig. No.	d Collar ID	L Collar Length	Collar Thickness	Optimum Load kgf/leg (lb./leg)	Resonance Point Hz	Resonance Magnification dB	Recommended Frequency Hz
V10Z61MS	1	3 (.12)	6 (.24)	0.5 (.02)	0.05 to 0.188 (.11 to .41)	64 to 42	7 to 9	90 @ 0.05 kg (.11 lb.) 60 @ 0.188 kg (.41 lb.)
V10Z61MA1	2	3 (.12)	7 (.28)	1 (.04)	0.125 to 0.625 (.28 to 1.38)	67 to 35	9 to 10	95 @ 0.125 kg (.28 lb.) 50 @ 0.625 kg (1.38 lb.)
V10Z61MA2					0.625 to 1 (1.38 to 2.2)	49 to 37	15 to 16	70 @ 0.625 kg (1.38 lb.) 55 @ 1 kg (2.2 lb.)
V10Z61MB1	3	4 (.16)	11 (.43)	1 (.04)	1 to 3.75 (2.2 to 8.27)	49 to 23	15 to 17	70 @ 1 kg (2.2 lb.) 35 @ 3.75 kg (8.27 lb.)
V10Z61MB2					3.75 to 8 (8.27 to 17.64)	20 to 15	19 to 23	30 @ 3.75 kg (8.27 lb.) 25 @ 8 kg (17.64 lb.)

NOTE: More technical data is given on pages 1-34, 1-35 & 2-3.



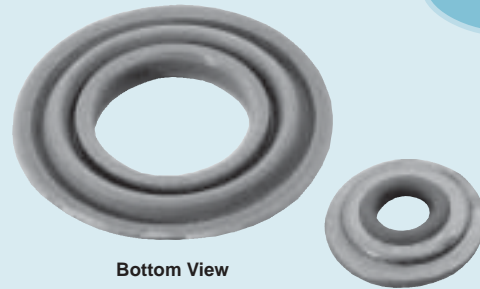
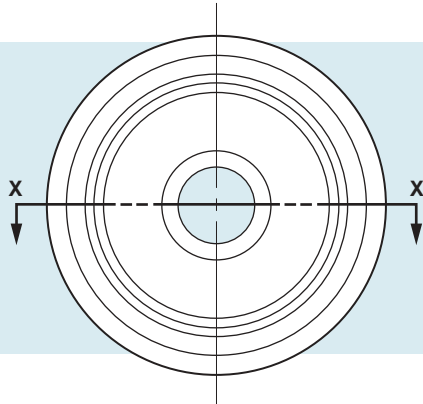
Bolt Mounts – Washer Type

www.vibrationmounts.com Phone: 516.328.3662 Fax: 516.328.3365

- MATERIAL: Washer – Stainless Steel
Seal – Silicone Rubber

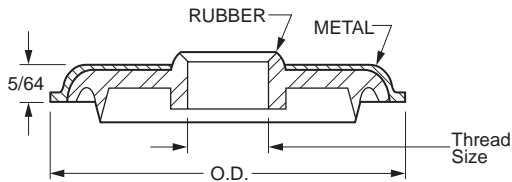
- CAN BE USED AS SEALING WASHER
- ONE-PIECE CONSTRUCTION • SELF-SEALING

New



Bottom View

Top View



SECTION X-X

TEMPERATURE RANGE: -160°F to +500°F (-106.7°C to +260°C)
PRESSURE RANGE: 100 psi (0.69 N/mm²) Internal & External

Catalog Number	Thread Size	Washer O.D.
V10Z14-04050	#6	1/2
V10Z14-04100		1
V10Z14-04150		1-1/2
V10Z14-05050	#8	1/2
V10Z14-05100		1
V10Z14-05150		1-1/2
V10Z14-06050	#10	1/2
V10Z14-06100		1
V10Z14-06150		1-1/2

Catalog Number	Thread Size	Washer O.D.
V10Z14-08100	1/4	1
V10Z14-08150		1-1/2
V10Z14-10100	5/16	1
V10Z14-10150		1-1/2
V10Z14-12100	3/8	1
V10Z14-12150		1-1/2
V10Z14-14100	7/16	1
V10Z14-14150		1-1/2
V10Z14-16100	1/2	1
V10Z14-16150		1-1/2

INSTALLATION: Bolt Mounts – Washer Type are installed on bolts or screws in the same manner as regular washers. The rubber section should always face the panel.



Silicone vs. Rubber

www.vibrationmounts.com Phone: 516.328.3662 Fax: 516.328.3365

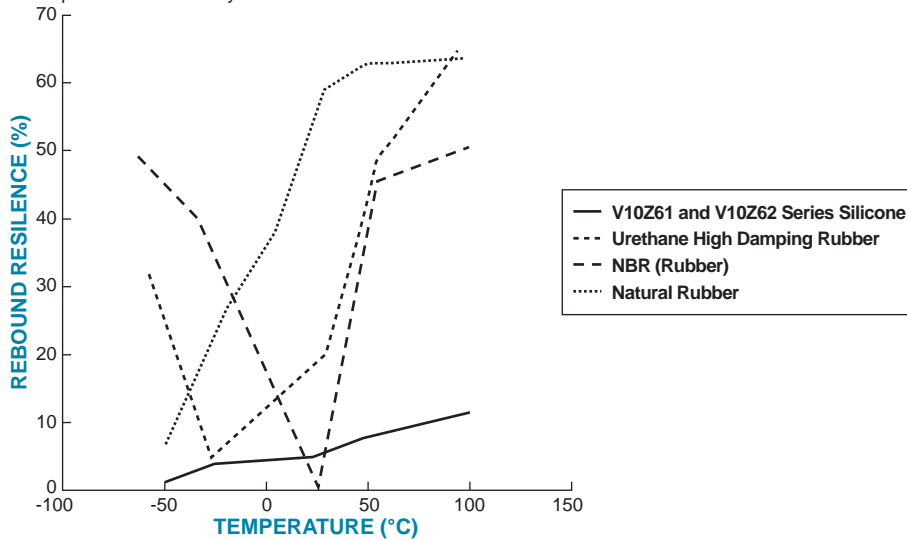
New

Metric

SECTION 7

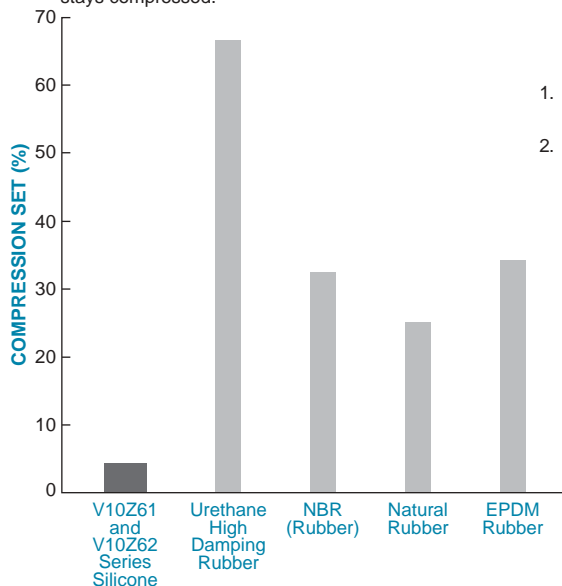
REBOUND RESILIENCE

No matter what the temperature could be, Silicone Gel performs more stably than other materials.



COMPRESSION SET

Outstanding restoration is available even when Silicone Gel stays compressed.



1. Compress above materials by 25% and leave compressed for 22 hours in 70°C (158° F).
2. Release compression and leave in normal temperature for 30 minutes.



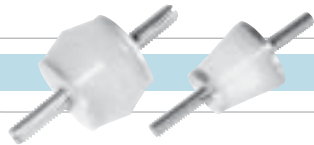
Unique Properties of Silicone Gel

www.vibrationmounts.com Phone: 516.328.3662 Fax: 516.328.3365

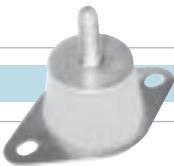
Silicone gel has many properties that are superior to many other vibration damping materials such as rubber and urethane.

- Stable performance over wide temperature range: -40°C (-40°F) to 100 ~ 200°C (212 ~ 392°F) depending on the composition.
- Good thermal conductivity.
- Excellent in light-load and high-frequency vibration applications.
- High ozone, UV and chemical resistance.

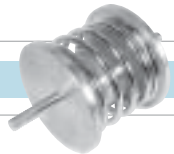
Many Forms of Silicone Gel Products Are Offered in This Catalog



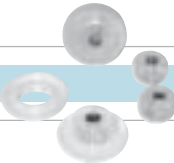
Stud Type Mounts p. 1-34 thru 1-36



Base Mounts p. 2-3



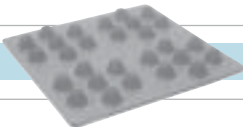
Spring Mounts p. 5-14



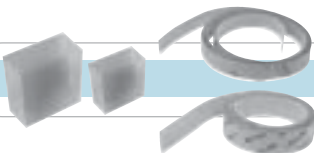
Bolt Mounts p. 7-15



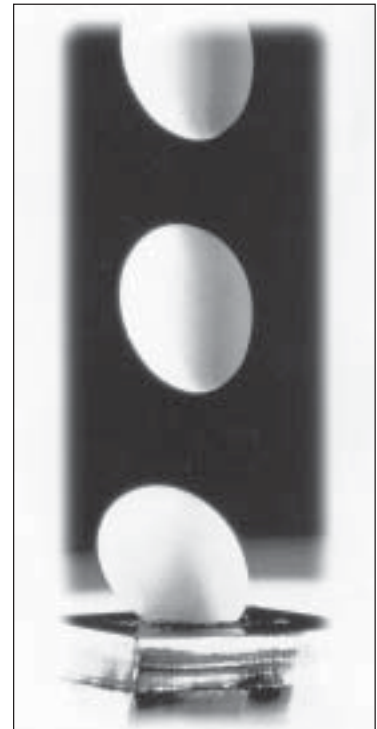
Silicone Foam Pads p. 8-8



Silicone Gel Pads p. 8-9



Silicone Gel Tape & Chips p. 8-10



Shock Absorbent Test

Impact of dropping a fresh egg from a height of 18 m (59 feet) onto a 2 cm (.79 in.) thick silicone gel pad is gently absorbed without breaking the egg.