



Finger-Flex Mounts

www.vibrationmounts.com Phone: 516.328.3662 Fax: 516.328.3365

TYPICAL INSTALLATION ARRANGEMENTS

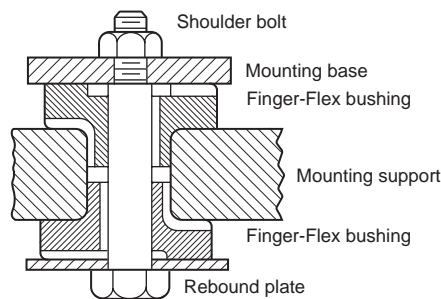
Multiple Installations

Any number of Finger-Flex mounts can be installed in parallel to achieve greater load-carrying capacity. These mounts may also be stacked in series to meet greater deflection requirements. Separators between mounts, if used, must be designed to meet the specific requirements of the installation.

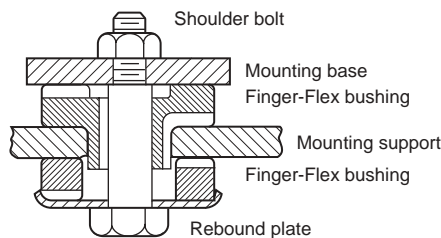
Typical Installations

Finger-Flex mounts are used for office machines, electronic equipment, motors, air conditioning equipment, heating equipment, fans, blowers, pumps and scientific equipment.

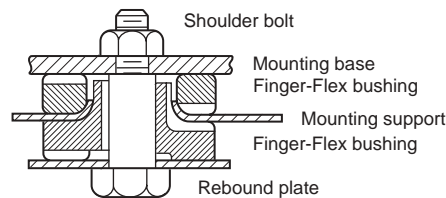
A.
If the load support is 1/2 inch (12.7 mm) or more thick, two Finger-Flex bushings are generally used.



B.
When the load supporting member is 1/8 inch (3.18 mm) to 1/2 inch (12.7 mm) thick, the standard bushing and ring combination is most suitable.



C.
If the load supporting member is less than 1/8 inch (3.18 mm) thick, the metal surrounding the mounting hole should be turned up. This provides additional mounting area for the bushing.



Rubber parts used are similar to type **V10R 4-1504 & V10R 4-1505** combination. The difference is that the flange of the rubber bushing within this assembled mounting has fingers on only one of its surfaces. The ring member absorbs both vibration and shock.



Finger-Flex Mounts – To 12 lbs.

www.vibrationmounts.com Phone: 516.328.3662 Fax: 516.328.3365

• MATERIAL: Natural Rubber

• FOR LOADS UP OF 4 TO 12 POUNDS (1.8 TO 5.4 kgf)



Fig. 1 RING STYLE

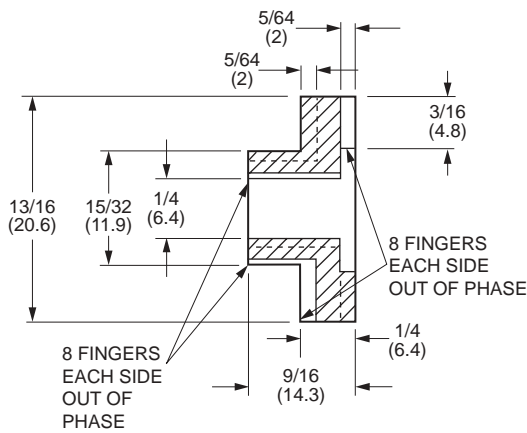
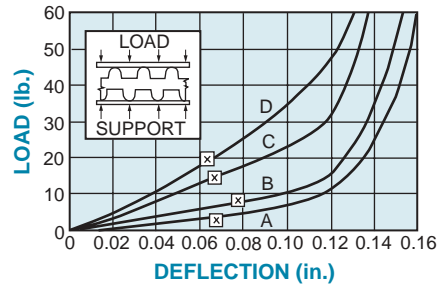
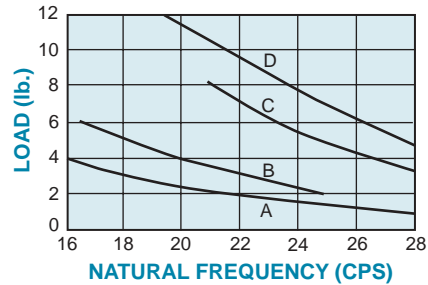


Fig. 2 BUSHING STYLE

NOTE: Dimensions in () are mm.



Deflection below the X are considered safe practice for static loads; data above the X are useful for calculating deflections under dynamic loads.



Catalog Number	Fig. No.	Hardness Durometer	Compression	Forcing Frequency in Cycles per Minute			
			Maximum Load lb. (kgf)	2400	2700	3000	3300
			Minimum Load for 81% Isolation lb. (kgf)				
V10R 4-1500A	1	30	4 (1.8)	4 (1.8)	3 (1.4)	2 (0.9)	—
V10R 4-1500B		40	6 (2.7)	6 (2.7)	4 (1.8)	3 (1.4)	—
V10R 4-1500C		50	9 (4.1)	9 (4.1)	6 (2.7)	4 (1.8)	3 (1.4)
V10R 4-1500D		60	12 (5.4)	12 (5.4)	9 (4.1)	7 (3.2)	5 (2.3)
V10R 4-1501A	2	30	4 (1.8)	4 (1.8)	3 (1.4)	2 (0.9)	—
V10R 4-1501B		40	6 (2.7)	6 (2.7)	4 (1.8)	3 (1.4)	—
V10R 4-1501C		50	9 (4.1)	9 (4.1)	6 (2.7)	4 (1.8)	3 (1.4)
V10R 4-1501D		60	12 (5.4)	12 (5.4)	9 (4.1)	7 (3.2)	5 (2.3)



Finger-Flex Mounts – To 25 lbs.

www.vibrationmounts.com Phone: 516.328.3662 Fax: 516.328.3365

• MATERIAL: Natural Rubber

• FOR LOADS UP OF 10 TO 25 POUNDS (4.5 TO 11.3 kgf)

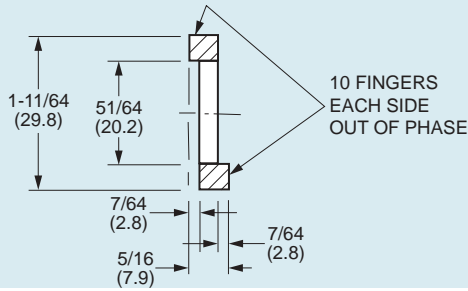


Fig. 1 RING STYLE

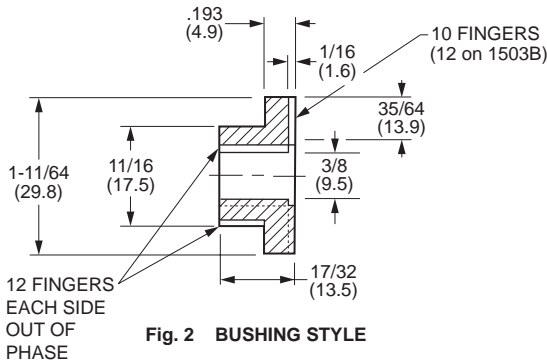
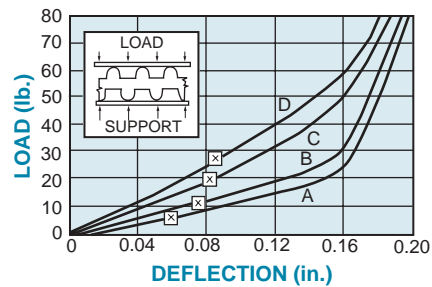
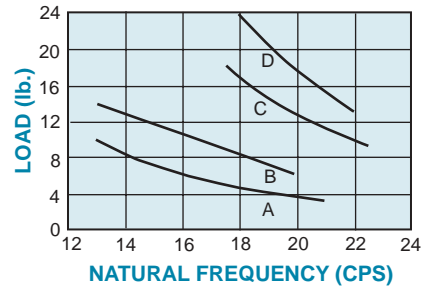


Fig. 2 BUSHING STYLE

NOTE: Dimensions in () are mm.



Deflections below the X are considered safe practice for static loads; data above the X are useful for calculating deflections under dynamic loads.



Catalog Number	Fig. No.	Hardness Durometer	Compression	Forcing Frequency in Cycles per Minute				
			Maximum Load lb. (kgf)	1750	2000	2250	2500	2750
				Minimum Load for 81% Isolation lb. (kgf)				
V10R 4-1502A	1	30	10 (4.5)	10 (4.5)	7 (3.2)	5 (2.3)	4 (1.8)	3 (1.4)
V10R 4-1502B		40	13 (5.9)	13 (5.9)	9 (4.1)	7 (3.2)	5 (2.3)	4 (1.8)
V10R 4-1502C		50	18 (8.2)	18 (8.2)	14 (6.4)	10 (4.5)	8 (3.6)	6 (2.7)
V10R 4-1502D		60	25 (11.3)	25 (11.3)	20 (9.1)	13 (5.9)	10 (4.5)	8 (3.6)
V10R 4-1503A	2	30	10 (4.5)	10 (4.5)	7 (3.2)	5 (2.3)	4 (1.8)	3 (1.4)
V10R 4-1503B		40	13 (5.9)	13 (5.9)	9 (4.1)	7 (3.2)	5 (2.3)	4 (1.8)
V10R 4-1503C		50	18 (8.2)	18 (8.2)	14 (6.4)	10 (4.5)	8 (3.6)	6 (2.7)
V10R 4-1503D		60	25 (11.3)	25 (11.3)	20 (9.1)	13 (5.9)	10 (4.5)	8 (3.6)



Finger-Flex Mounts – To 37 lbs.

www.vibrationmounts.com Phone: 516.328.3662 Fax: 516.328.3365

• MATERIAL: Natural Rubber

• FOR LOADS OF 14 TO 37 POUNDS (6.4 TO 16.9 kgf)

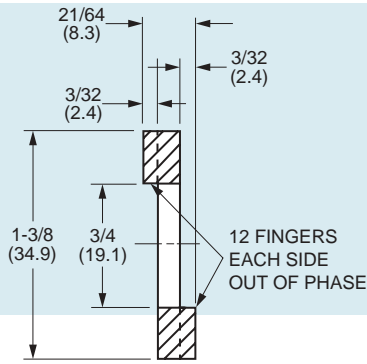


Fig. 1 RING STYLE

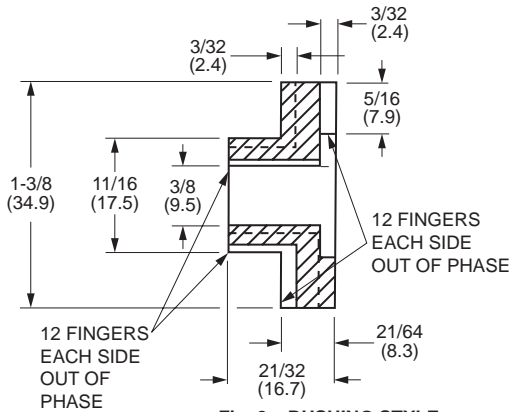
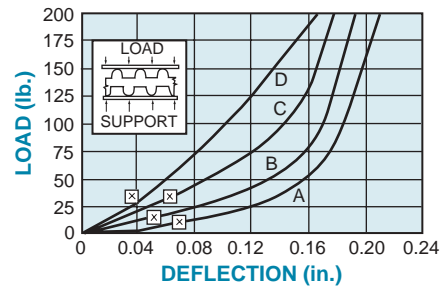
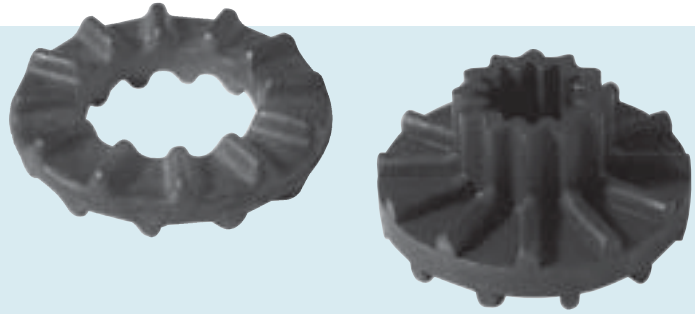
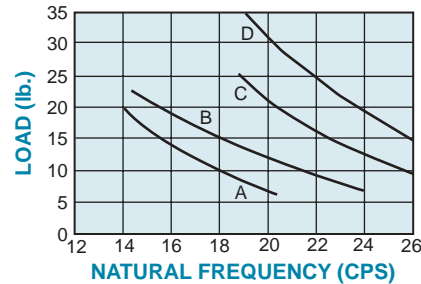


Fig. 2 BUSHING STYLE

NOTE: Dimensions in () are mm.



Deflections below the X are considered safe practice for static loads; data above the X are useful for calculating deflections under dynamic loads.



Catalog Number	Fig. No.	Hardness Durometer	Compression Maximum Load lb. (kgf)	Forcing Frequency in Cycles per Minute				
				2000	2250	2500	2750	3000
				Minimum Load for 81% Isolation lb. (kgf)				
V10R 4-1504A	1	30	14 (6.4)	—	12 (5.4)	9 (4.1)	7 (3.2)	5 (2.3)
V10R 4-1504B		40	19 (8.6)	19 (8.6)	14 (6.4)	10 (4.5)	8 (3.6)	6 (2.7)
V10R 4-1504C		50	27 (12.2)	—	25 (11.3)	19 (8.6)	16 (7.3)	13 (5.9)
V10R 4-1504D		60	37 (16.8)	—	—	32 (14.5)	25 (11.3)	21 (9.5)
V10R 4-1505A	2	30	14 (6.4)	—	12 (5.4)	9 (4.1)	7 (3.2)	5 (2.3)
V10R 4-1505B		40	19 (8.6)	19 (8.6)	14 (6.4)	10 (4.5)	8 (3.6)	6 (2.7)
V10R 4-1505C		50	27 (12.2)	—	25 (11.3)	19 (8.6)	16 (7.3)	13 (5.9)
V10R 4-1505D		60	37 (16.8)	—	—	32 (14.5)	25 (11.3)	21 (9.5)



Finger-Flex Mounts – To 80 lbs.

www.vibrationmounts.com Phone: 516.328.3662 Fax: 516.328.3365

● MATERIAL: Natural Rubber

● FOR LOADS OF 35 TO 80 POUNDS (15.9 TO 36.3 kgf)

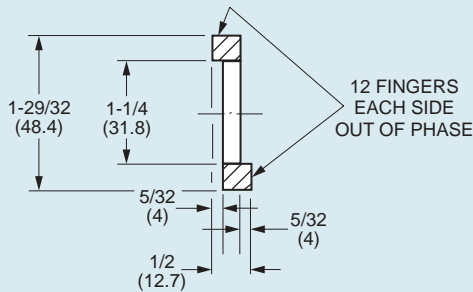


Fig. 1 RING STYLE

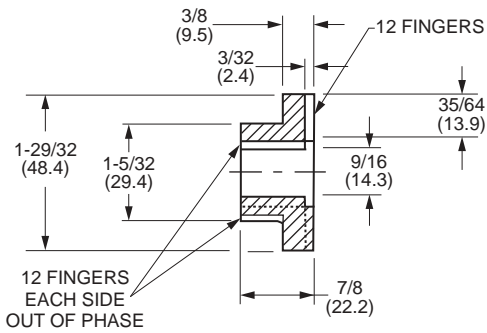
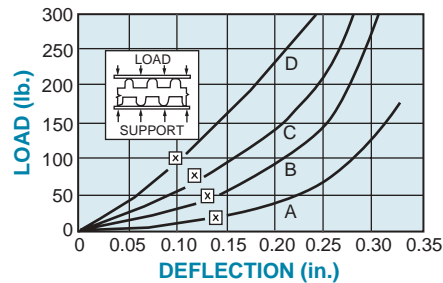
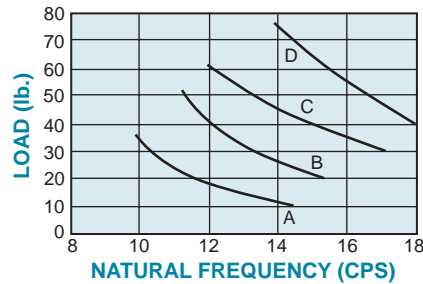


Fig. 2 BUSHING STYLE

NOTE: Dimensions in () are mm.



Deflections below the X are considered safe practice for static loads; data above the X are useful for calculating deflections under dynamic loads.



Catalog Number	Fig. No.	Hardness Durometer	Compression Maximum Load lb. (kgf)	Forcing Frequency in Cycles per Minute				
				1500	1750	2000	2250	2500
				Minimum Load for 81% Isolation lb. (kgf)				
V10R 4-1506A	1	30	35 (15.9)	30 (13.6)	17 (7.7)	13 (5.9)	10 (4.5)	8 (3.6)
V10R 4-1506B		40	50 (22.7)	50 (22.7)	24 (10.9)	18 (8.2)	14 (6.4)	12 (5.4)
V10R 4-1506C		50	65 (29.5)	—	40 (18.1)	31 (14.1)	24 (10.9)	20 (9.1)
V10R 4-1506D		60	80 (36.3)	—	76 (34.5)	56 (25.4)	43 (19.5)	33 (15)
V10R 4-1507A	2	30	35 (15.9)	30 (13.6)	17 (7.7)	13 (5.9)	10 (4.5)	8 (3.6)
V10R 4-1507B		40	50 (22.7)	50 (22.7)	24 (10.9)	18 (8.2)	14 (6.4)	12 (5.4)
V10R 4-1507C		50	65 (29.5)	—	40 (18.1)	31 (14.1)	24 (10.9)	20 (9.1)
V10R 4-1507D		60	80 (36.3)	—	76 (34.5)	56 (25.4)	43 (19.5)	33 (15)



Finger-Flex Mounts – To 350 lbs.

www.vibrationmounts.com Phone: 516.328.3662 Fax: 516.328.3365

• MATERIAL: Natural Rubber

• FOR LOADS OF 120 TO 350 POUNDS (54.4 TO 158.8 kgf)

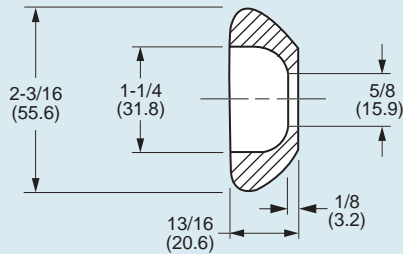


Fig. 1 RING STYLE

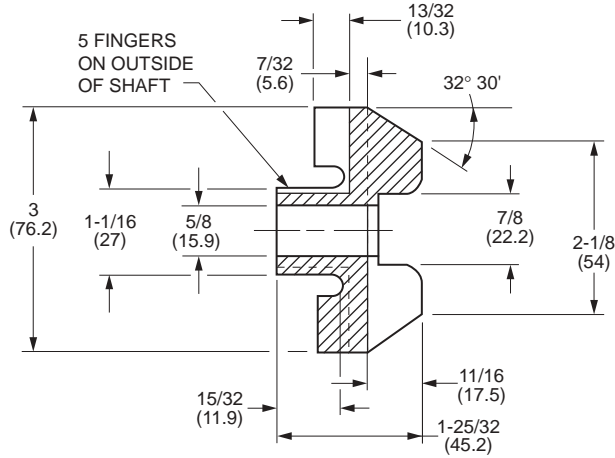
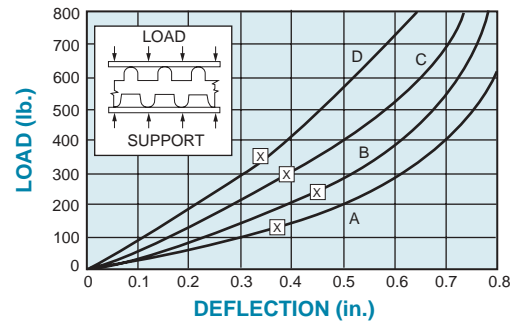
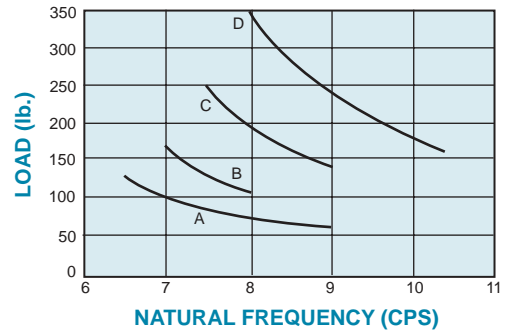


Fig. 2 BUSHING STYLE

NOTE: Dimensions in () are mm.



Deflections below the X are considered safe practice for static loads; data above the X are useful for calculating deflections under dynamic loads.



Catalog Number	Fig. No.	Hardness Durometer	Compression Maximum Load lb. (kgf)	Forcing Frequency in Cycles per Minute				
				900	1000	1250	1500	1750
				Minimum Load for 81% Isolation lb. (kgf)				
V10R 4-1508C	1	50	250 (113.4)	250 (113.4)	178 (80.7)	105 (47.6)	65 (29.5)	48 (21.8)
V10R 4-1508D		60	350 (158.8)	324 (147)	242 (109.8)	141 (64)	93 (42.2)	66 (29.9)
V10R 4-1509A	2	30	120 (54.4)	—	98 (44.5)	46 (20.9)	30 (13.6)	22 (10)
V10R 4-1509B		40	160 (72.6)	160 (72.6)	104 (47.2)	67 (30.4)	46 (20.9)	34 (15.4)
V10R 4-1509C		50	250 (113.4)	250 (113.4)	178 (80.7)	105 (47.6)	65 (29.5)	48 (21.8)
V10R 4-1509D		60	350 (158.8)	324 (147)	242 (109.8)	141 (64)	93 (42.2)	66 (29.9)