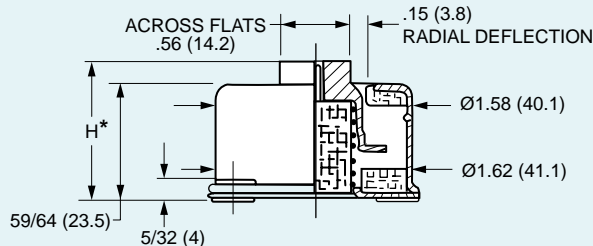


Steel Spring and Mesh Mounts – To 10 lbs.

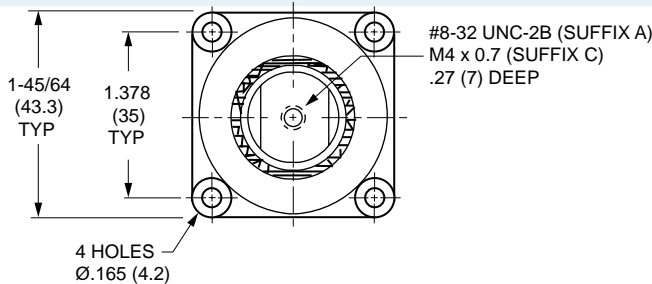
www.vibrationmounts.com Phone: 516.328.3662 Fax: 516.328.3365

- **MATERIAL:** Housing – Aluminum Alloy, Anodized
Eyelets – Brass, Tin Plated
Isolators – Stainless Steel Spring and Mesh

- **CORROSIVE ENVIRONMENT • STAINLESS STEEL MESH**
• **FOR LOADS OF .5 TO 10 POUNDS (0.25 TO 4.6 kgf)**

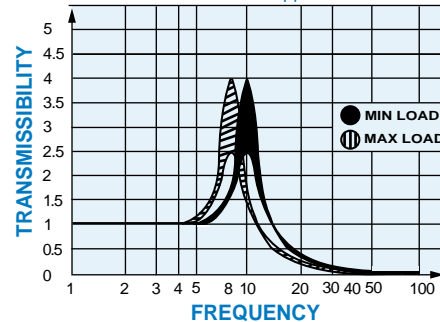


NOTE: MAX BOLT LENGTH INTO CAP IS .276 (7)



NOTE: Dimensions in () are mm.

TYPICAL TRANSMISSIBILITY CURVE
as a function of applied load



DYNAMIC CHARACTERISTICS

Ratio between transverse and axial stiffness (vertical) approximately 1:2.5
Natural frequency = 7 to 11 Hz vertical and 4.5 to 7 Hz transverse depending on load, for a displacement input $\pm .014$ (0.35).
Maximum displacement input $\pm .016$ (0.4).
Transmissibility 4:1.
Conforms to MIL-E-5400

TEMPERATURE RANGE: -94°F to +347°F
(-70°C to +175°C)

LOADING LIMITATIONS

Prior to abutting snubber, load corresponding to a continuous acceleration of at least 2 G.
Loads corresponding to at least 10 G may be accepted without subsequently affecting the mount performance.
Maximum displacement of the suspended unit under limiting loads $\pm .197$ (5).

APPLICATIONS

- AIRCRAFT
- MARINE
- MOBILE
- ROTATING MACHINES

CATALOG NUMBER DESIGNATION:

V 1 0 Z 1 9 - 7 0 1

Load Code

Cap Code

Thread

A #8-32UNC-2B

C M4 x 0.7

| Load Code | Static Load | | Weight (Approx.) | |
|-----------|--------------|-------------|------------------|------|
| | lb. | kgf | oz. | kg |
| 1 | .55 – 1.00 | 0.25 – 0.45 | | |
| 2 | .80 – 1.80 | 0.35 – 0.8 | | |
| 3 | 1.50 – 3.40 | 0.7 – 1.5 | 1.4 | 0.04 |
| 4 | 2.20 – 5.60 | 1 – 2.55 | | |
| 5 | 5.60 – 10.10 | 2.55 – 4.6 | | |

| Cap Code | H* - Height | | | |
|-----------|-------------|----|-----------|------|
| | Free | | Max. Load | |
| | in. | mm | in. | mm |
| S – Short | 1.50 | 38 | 1.09 | 27.7 |
| L – Long | 1.61 | 41 | 1.21 | 30.7 |

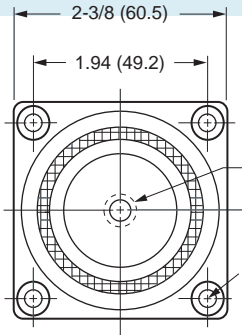
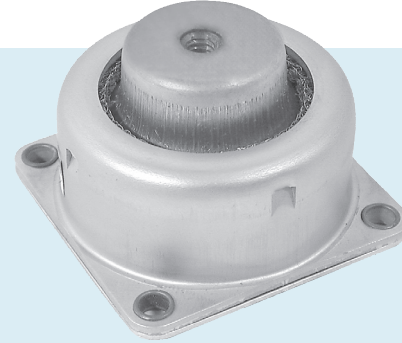
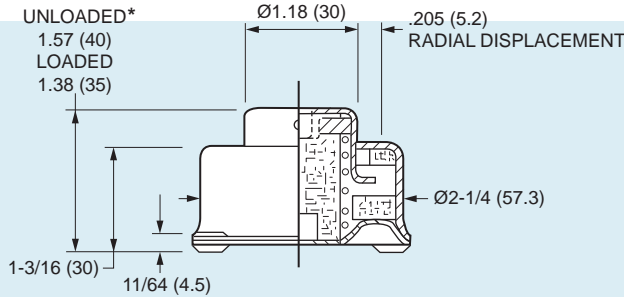


Steel Spring and Mesh Mounts – To 242 lbs.

www.vibrationmounts.com Phone: 516.328.3662 Fax: 516.328.3365

- **MATERIAL:** Housing – Aluminum Alloy, Anodized
Eyelets – Brass, Tin Plated
Isolators – Stainless Steel Spring and Mesh

- **CORROSIVE ENVIRONMENT • STAINLESS STEEL MESH**
• **FOR LOADS OF 1.5 TO 242 POUNDS (0.7 TO 110 kgf)**



NOTE:
MAX. ATTACHING BOLT LENGTH INTO CAPS .275 (7)

- 1/4-20 UNC-2B (SUFFIX A)
- 1/4-28 UNF-2B (SUFFIX B)
- M6 (SUFFIX C)
- 3/8-24 UNF-2B (SUFFIX D)

NOTE: Dimensions in () are mm.

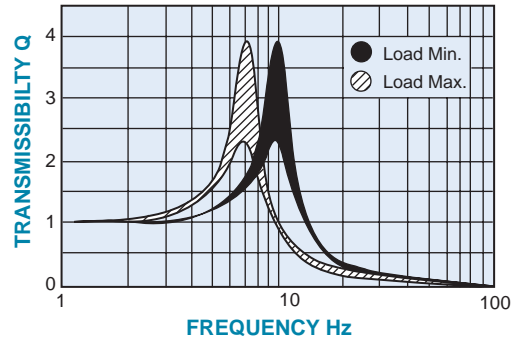
DYNAMIC CHARACTERISTICS

In accordance with curve 1 of spec MIL-C-172.
Ratio between transverse and axial stiffness (vertical): approximately 1:2.5.
Natural Frequency = 7 to 10 Hz vertical and 4.5 to 6 Hz transverse depending on load for a displacement input of $\pm .030$ (0.75).
Maximum displacement input $\pm .031$ (0.8)
Transmissibility: 4:1
Conforms to MIL-E-5400C

TEMPERATURE RANGE: -94°F to +347°F (-70°C to +175°C)

WEIGHT: 3.53 - 4.41 oz. (100-125 g) approx.

TYPICAL TRANSMISSIBILITY CURVE
as a function of applied load



LOADING LIMITATIONS

Just prior to abutting snubber, load corresponding to a continuous acceleration of at least 2 G.
Loads corresponding to at least 10 G may be accepted without subsequently affecting the mount performance.
Maximum displacement of the suspended unit under limiting loads $\pm .236$ (6).

APPLICATIONS

- AIRCRAFT
- MARINE
- MOBILE
- ROTATING MACHINES

| Catalog Number | | | | Static Load | |
|----------------|---------------|--------------|------------------|-----------------|------------|
| 1/4-20 UNC-2B | 1/4-28 UNF-2B | M6 | 3/8-24 UNF-2B | lb. | kgf |
| V10Z22-7201A | V10Z22-7201B | V10Z22M7201C | — | 1.55 – 2.75 | 0.7 – 1.25 |
| V10Z22-7202A | V10Z22-7202B | V10Z22M7202C | — | 2.55 – 5.00 | 1.15 – 2.3 |
| V10Z22-7203A | V10Z22-7203B | V10Z22M7203C | — | 4.40 – 9.90 | 2 – 4.5 |
| V10Z22-7204A | V10Z22-7204B | V10Z22M7204C | — | 6.20 – 12.35 | 2.8 – 5.6 |
| V10Z22-7205A | V10Z22-7205B | V10Z22M7205C | V10Z22-7205D | 9.90 – 19.85 | 4.5 – 9 |
| V10Z22-7206A | V10Z22-7206B | V10Z22M7206C | — | 15.40 – 30.85 | 7 – 14 |
| V10Z22-7207A | V10Z22-7207B | V10Z22M7207C | V10Z22-7207D | 17.65 – 39.70 | 8 – 18 |
| V10Z22-7209A | V10Z22-7209B | V10Z22M7209C | — | 35.30 – 48.50 | 16 – 22 |
| V10Z22-7210A | V10Z22-7210B | V10Z22M7210C | V10Z22-7210D | 44.10 – 72.75 | 20 – 33 |
| V10Z22-7211A | V10Z22-7211B | V10Z22M7211C | ** V10Z22-7211DL | 72.75 – 132.30 | 33 – 60 |
| V10Z22-7212A | V10Z22-7212B | V10Z22M7212C | ** V10Z22-7212DL | 132.28 – 242.51 | 60 – 110 |

*Long cap, unloaded height 1.76 (44.6), loaded height 1.61 (41), available on request.
To order with long cap, add **L** to the end of Catalog Number.

**Available with long cap only.

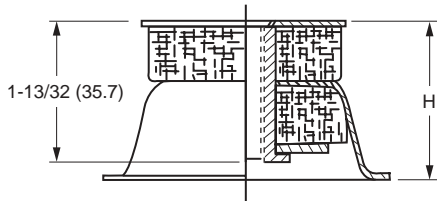
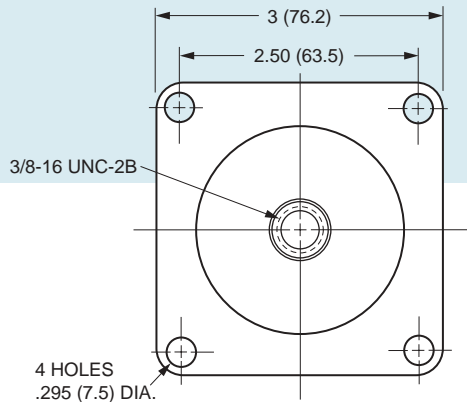
To be discontinued when present stock is depleted.



Steel Mesh Mounts – To 1000 lbs.

www.vibrationmounts.com Phone: 516.328.3662 Fax: 516.328.3365

- **MATERIAL:** Cap and Base – Aluminum Alloy
Center Stud – Aluminum Alloy
Isolator – Knitted Stainless Steel Mesh
- **FINISH:** Alocrome 1200 on all Aluminum components
- **FOR LOADS OF 10 TO 1000 POUNDS (4.6 TO 453.5 kgf)**
- **STAINLESS STEEL MESH**



NOTE: Dimensions in () are mm.

APPLICATIONS

- LIGHTWEIGHT MACHINE TOOLS
- PRINTING AND TEXTILE MACHINERY

CHARACTERISTICS

Although normally intended to be used in compression, they will accept accidental tensile loads. The mounts should be fixed to the floor for loads in excess of 220 lb. (99.8 kgf) or when working conditions require it. They will accept compressive loads at least five times the static load.

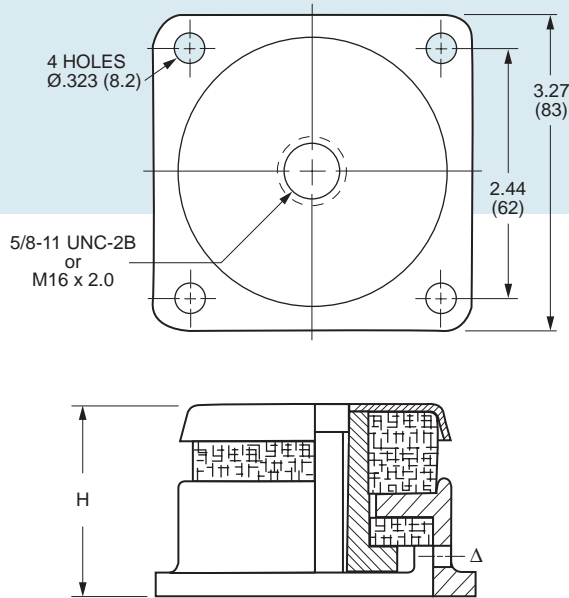
| Catalog Number | Static Load | | Natural Frequency Hz | Weight | | H - Height | | | |
|----------------|-------------|---------------|--|--------|------|------------|------|-----------|------|
| | lb. | kgf | | oz. | kg | Free | | Max. Load | |
| | | | | | | in. | mm | in. | mm |
| V10Z28-1641 | 10 – 20 | 4.55 – 9.05 | 13 – 17 For an amplitude of ± .012(0.3) | 6.33 | 0.18 | 1.91 | 48.6 | 1.44 | 36.6 |
| V10Z28-1642 | 20 – 50 | 9.05 – 22.5 | | | | | | | |
| V10Z28-1643 | 50 – 100 | 22.5 – 45.35 | | | | | | | |
| V10Z28-1644 | 100 – 200 | 45.35 – 90.7 | | | | | | | |
| V10Z28-1645 | 200 – 500 | 90.7 – 226.8 | | | | | | | |
| V10Z28-1646 | 500 – 1000 | 226.8 – 453.5 | | | | | | | |



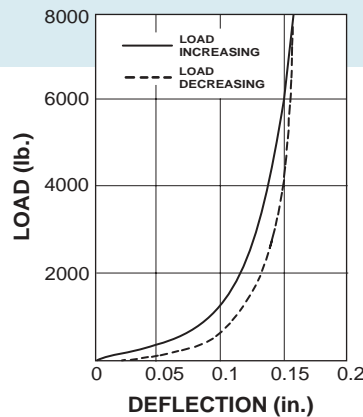
Steel Mesh Mounts – To 1598 lbs.

www.vibrationmounts.com Phone: 516.328.3662 Fax: 516.328.3365

- **MATERIAL: Housing** – Machined Casting
Center and Cup Washer are Zinc Plated and Gold Passivated Mild Steel
- **CORROSIVE ENVIRONMENT** • **STAINLESS STEEL MESH**
- **FOR LOADS OF 77 TO 1598 POUNDS (35 TO 725 kgf)**
- Isolator** – Stainless Steel Mesh



NOTE: Dimensions in () are mm.



APPLICATIONS

Primarily developed for heavy-duty applications where severe shock forces are encountered, these mounts are especially recommended for vehicle and marine installations where there are high starting torques or reversals of loads. They are capable of withstanding compression loads as high as ten times the static loads and are used for isolating marine fans, mobile engines, generators, instrument consoles and general machine tools such as lathes, milling machines, sloters, broachers, etc.

TEMPERATURE: -94°F to +347°F (-70°C to +175°C)

| Catalog Number | | Static Load | | Natural Frequency | H - Height | |
|----------------|--------------|-------------|-----------|-------------------|-----------------|-----------------|
| 5/8-11 UNC-2B | M16 x 2.0 | lb. | kgf | Hz | Free | Loaded |
| V10Z27-3021A | V10Z27M3021C | 77 – 396 | 35 – 180 | | | |
| V10Z27-3022A | V10Z27M3022C | 308 – 793 | 140 – 360 | 14 – 22 | 1-31/32 (50) | 1-13/16 (46) |
| V10Z27-3023A | V10Z27M3023C | 606 – 1598 | 275 – 725 | | | |

Δ An access hole is provided to be able to pin the center section for assembling the mounting bolt or to remove rusted bolt.

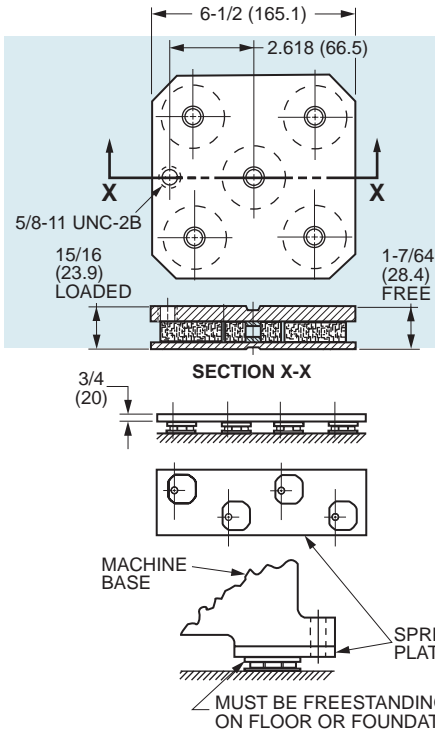


Steel Mesh Mounts – To 20000 lbs.

www.vibrationmounts.com Phone: 516.328.3662 Fax: 516.328.3365

- **MATERIAL:** Mounting Plates – Mild Steel, Painted
Isolators – Knitted Stainless Steel Mesh

- **FOR COMPRESSION LOADS OF 1000 TO 20000 POUNDS (453 TO 9072 kgf)**
- **FREESTANDING • CORROSIVE ENVIRONMENT**



APPLICATIONS

- DESIGNED PRINCIPALLY FOR HEAVY-DUTY PUNCH AND PANEL PRESSES
- LARGE MACHINE TOOLS
- ROCK CRUSHERS

FLOOR MOUNTING

To support heavy loads, the mounts are grouped together on a spreader plate. The spreader plate should be made the same size as the floor bearing area of the base. Fasten the mounts to the spreader plate by the 5/8 tapped hole provided, then fasten the spreader to the machine base.

EXAMPLE:

Total Weight of Machine = 65 TONS $\frac{\text{Machine Weight}}{\text{Capacity of Mount}} = \frac{65}{9} = 7.22$ (use 8 mounts)

| Catalog Number | Static Load Range | |
|----------------|-------------------|-------------|
| | lb. | kgf |
| V10Z33-1133-1 | 1000 – 2000 | 453 – 907 |
| V10Z33-1133-2 | 2000 – 5000 | 907 – 2268 |
| V10Z33-1133-3 | 5000 – 10000 | 2268 – 4536 |
| V10Z33-1133-4 | 10000 – 20000 | 4536 – 9072 |

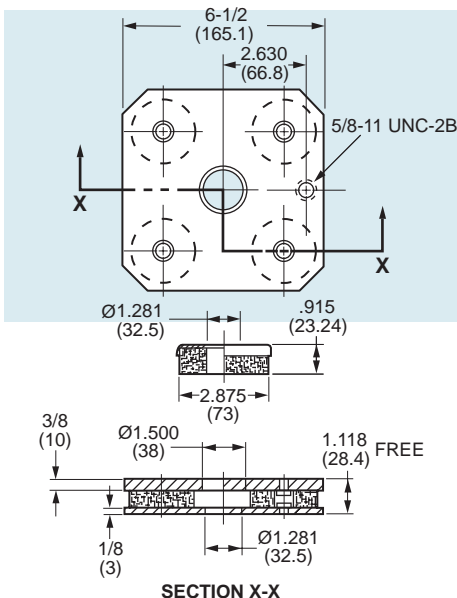


NOTE: Dimensions in () are mm.

Steel Mesh Mounts – To 16000 lbs.

- **MATERIAL:** Mounting Plates – Mild Steel, Painted
Isolators – Knitted Stainless Steel Mesh

- **FOR COMPRESSION LOADS OF 800 TO 16000 POUNDS (363 TO 7257 kgf)**
- **FLOOR MOUNTED • CORROSIVE ENVIRONMENT**

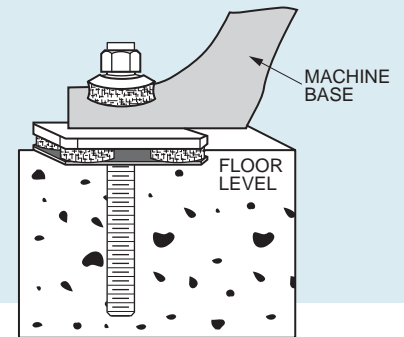


APPLICATIONS

Designed for heavy machine tools, this low profile mount serves the dual purpose of effectively isolating machine vibration while preventing movement by holding firmly on its base.

FLOOR MOUNTING

It is important that the stud is firmly fixed into the floor before the machine is bolted down. In the illustration, Rawbolt "studding" has been used, but foundation anchoring hardware is not provided with the mount. For use on level surfaces only. Use 1.0 (25.4) maximum diameter anchoring studs.



| Catalog Number | Static Load Range | |
|----------------|-------------------|-------------|
| | lb. | kgf |
| V10Z34-1139-1 | 800 – 1600 | 363 – 726 |
| V10Z34-1139-2 | 1600 – 4000 | 726 – 1814 |
| V10Z34-1139-3 | 4000 – 8000 | 1814 – 3628 |
| V10Z34-1139-4 | 8000 – 16000 | 3628 – 7257 |

NOTE: Dimensions in () are mm.