

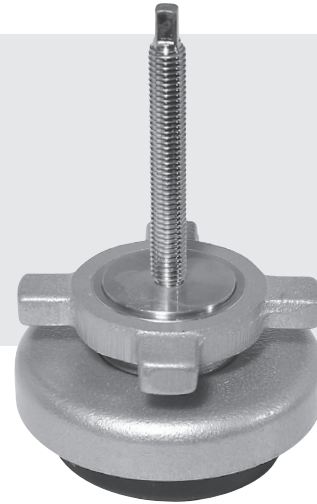
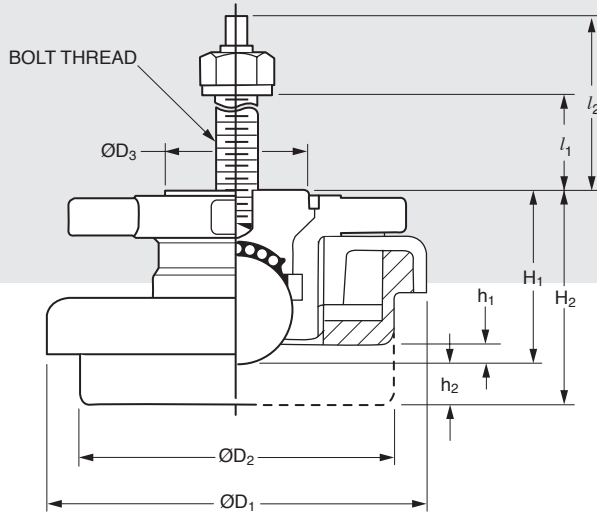


# Leveling Carry Mounts

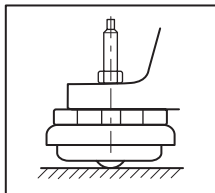
www.vibrationmounts.com Phone: 516.328.3662 Fax: 516.328.3365

- **MATERIAL:** Spoked Wheel – Steel, Painted  
Bolt – Steel, Zinc Plated  
Housing – Iron, Galvanized  
Ball – Steel  
Isolator – Oil-Resistant Rubber

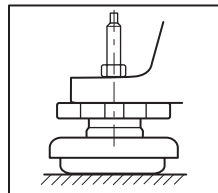
- **BALL TYPE**  
• FOR LOADS OF 200 TO 600 kgf (441 TO 1323 lb.)



Metric



MOUNT IN ROLLING POSITION



MACHINE LEVELED RUBBER PAD EXTENDED

## INSTALLATION

Place the CARRY MOUNT under the bolt hole of the machine. Insert the bolt into the screw hole of the CARRY MOUNT and screw it in until the bolt stops.

Turn the spoked wheel clockwise to lift the rubber mount. The steel ball then allows free movement.

Turn the spoked wheel counterclockwise to lift the steel ball. The rubber mount now supports the machine in place.

## DESCRIPTION

CARRY MOUNT is a moveable mount in which the rubber mount is incorporated with a rotating ball. They allow movement of machines and give excellent vibration-free installations.

## FEATURES:

- Compact Design
- Excellent Stability
- Easy Movement & Setting
- Lightweight
- Low Price

## APPLICATIONS

- SHOP MACHINES
- OFFICE EQUIPMENT
- MEDICAL INSTRUMENTS

Catalog Number	Working Load Max. kgf (lb.)	H <sub>1</sub>	H <sub>2</sub>	D <sub>1</sub> ±2 (±.08)	D <sub>2</sub>	D <sub>3</sub>	l <sub>1</sub>	l <sub>2</sub>	h <sub>1</sub>	h <sub>2</sub>	Bolt Thread
V10Z44MCM200	200 (441)	58 (2.3)	70 (2.76)	100 (3.9)	80 (3.1)	44 (1.7)	67 (2.63)	92 (3.6)	7.5 (.3)	12 (.47)	M12
V10Z44MCM600	600 (1323)	65 (2.6)	79 (3.11)	140 (5.5)	120 (4.7)	54 (2.1)	72 (2.83)	102 (4.0)		14 (.55)	M16

NOTE: Dimensions in ( ) are inch.

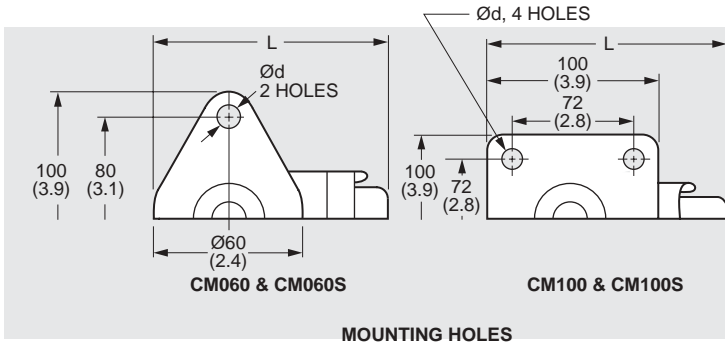


# Leveling Carry Mounts

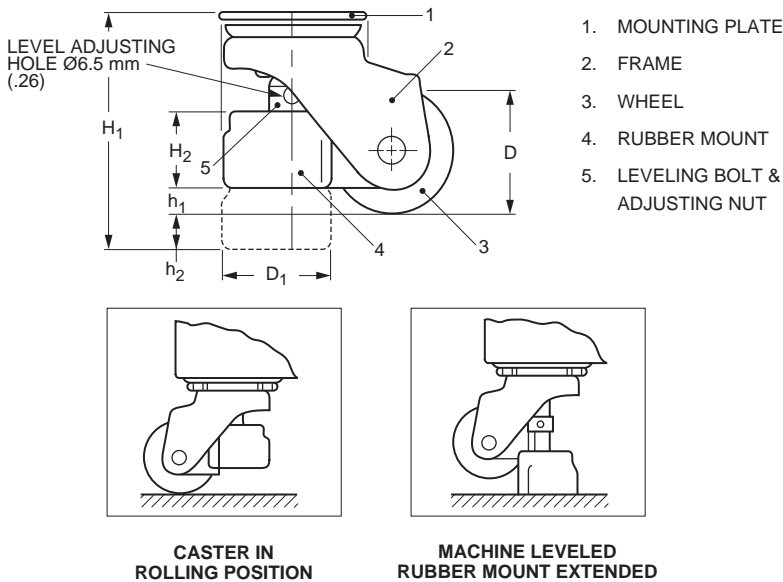
www.vibrationmounts.com Phone: 516.328.3662 Fax: 516.328.3365

- **MATERIAL:** Frame & Bolt – Steel, Galvanized  
Wheel – Nylon  
Isolator – Oil-Resistant Rubber

- **CASTER TYPE**  
• **FOR LOADS OF 60 TO 100 kgf (132 TO 220 lb.)**



## Metric



### FEATURES:

- Compact Design
- Excellent Stability
- Easy Movement & Setting
- Lightweight
- Low Price

### APPLICATIONS

- SHOP MACHINES
- OFFICE EQUIPMENT
- MEDICAL INSTRUMENTS

### DESCRIPTION

CARRY MOUNT is a moveable mount in which the rubber mount is incorporated into a caster. They allow movement of machines and give excellent vibration-free installations.

### INSTALLATION

Raise machine and attach casters with suitable bolts. Insert screwdriver or 1/4 diameter rod into level adjusting hole and turn it to the left (clockwise) to lift the rubber mount. Machine can now be easily moved. Once relocated, level adjusting hole is rotated counterclockwise to lift the wheel. The machine is then positioned in place.

Catalog Number	Working Load Max. kgf (lb.)	H <sub>1</sub>	H <sub>2</sub>	D	D <sub>1</sub>	h <sub>1</sub>	h <sub>2</sub>	d	L
V10Z43MCM060	60 (132)	80 (3.1)	30 (1.18)	51 (2.00)	57 (2.24)	10 (.39)	15 (.59)	8.8 (.35)	95 (3.7)
V10Z43MCM060S		70 (2.8)	8.9 (.35)	50 (1.97)	34 (1.34)		16 (.63)		
V10Z43MCM100	100 (220)	120 (4.7)	46 (1.81)	75 (2.95)	76 (2.99)	20 (.79)	17 (.67)	11 (.43)	143 (5.6)
V10Z43MCM100S		85 (3.3)	8.9 (.35)	60 (2.36)	34 (1.34)	15 (.59)	15 (.59)		126 (5.0)

NOTE: Dimensions in ( ) are inch.