



Leveling Mounts— Iso-Pad Type – To 4000 lbs.

www.vibrationmounts.com Phone: 516.328.3662 Fax: 516.328.3365

● **MATERIAL:** Isolator – Iso-Pad (Standard Load)

Refer to characteristics shown on page 8-2

Base – Casting 30000 psi (2109 kgf/cm²) Tensile Strength

Bolt – SAE Grade No. 5 Heat-Treated

● **FOR LOADS OF 200 TO 4000 POUNDS**

(90.7 TO 1814.4 kgf)

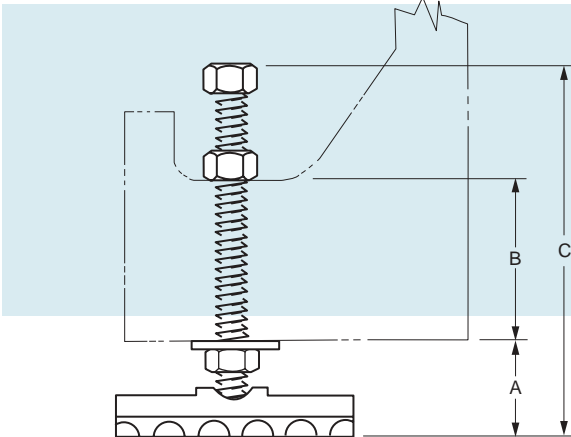


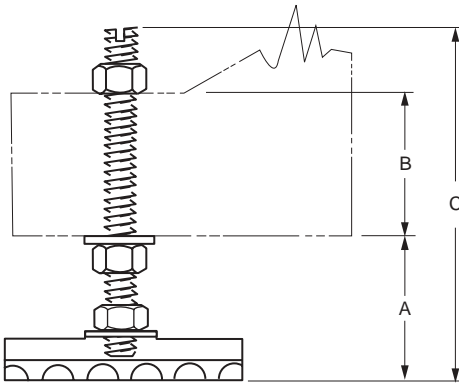
Fig. 1 (REGULAR MOUNT)



Fig. 1



Fig. 2



*Fig. 2 (FIXED MOUNT)

| Catalog Number | Fig. | Pad Dimensions in. (mm) | Pad Area sq. in. | Pad Area sq. cm | Load per Mount lb. (kgf) | Bolt Dimensions | Dimensions | | |
|----------------|------|---|------------------|-----------------|----------------------------------|-----------------|------------------|----------------------|-------------------|
| | | | | | | | A Minimum Height | B Maximum Adjustment | C Overall Height |
| V10R12-R22 | 1 | 2 x 2 x 5/8 (50.8 x 50.8 x 15.9) | 4 | 25.8 | 200 – 500 (90.7 – 226.8) | 1/2-20 x 4 | 1-1/2 (38.1) | 2-3/4 (69.9) | 5-1/4 (133.3) |
| V10R12-R33 | | 3 x 3 x 5/8 (76.2 x 76.2 x 15.9) | 9 | 58.1 | 500 – 1200 (226.8 – 544.3) | | | | |
| V10R12-R44 | | 4 x 4 x 5/8 (101.6 x 101.6 x 15.9) | 16 | 103.2 | 1200 – 2400 (544.3 – 1088.6) | 3/4-16 x 6 | 1-3/4 (44.5) | 4-3/4 (120.7) | 7-1/2 (190.5) |
| V10R12-R66 | | 5-1/2 x 5-1/2 x 5/8 (139.7 x 139.7 x 15.9) | 30-1/4 | 195.2 | 2400 – 4000 (1088.6 – 1814.4) | | | | |
| V10R12-F22 | 2 | 2 x 2 x 5/8 (50.8 x 50.8 x 15.9) | 4 | 25.8 | 200 – 500 (90.7 – 226.8) | 1/2-20 x 4 | 1-7/8 (47.6) | 2-9/16 (65.1) | 4-3/4 (120.7) |
| V10R12-F33 | | 3 x 3 x 5/8 (76.2 x 76.2 x 15.9) | 9 | 58.1 | 500 – 1200 (226.8 – 544.3) | | | | |
| V10R12-F44 | | 4 x 4 x 5/8 (101.6 x 101.6 x 15.9) | 16 | 103.2 | 1200 – 2400 (544.3 – 1088.6) | 3/4-16 x 6 | 2-7/16 (61.9) | 3-13/16 (96.8) | 6-9/16 (166.7) |
| V10R12-F66 | | 5-1/2 x 5-1/2 x 5/8 (139.7 x 139.7 x 15.9) | 30-1/4 | 195.2 | 2400 – 4000 (1088.6 – 1814.4) | | | | |

* Recommended for use under impact machinery.
Additional bolt and mount sizes available on request.