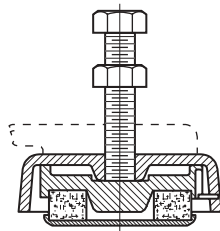
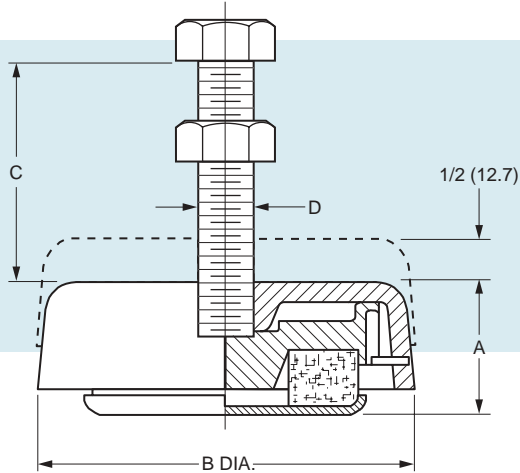




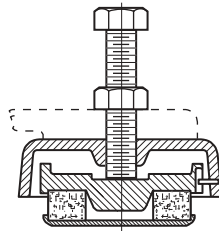
# Leveling Mounts – To 10000 lbs.

www.vibrationmounts.com Phone: 516.328.3662 Fax: 516.328.3365

- FOR COMPRESSION LOADS ONLY • STAINLESS STEEL MESH
- CORROSIVE ENVIRONMENT • FOR LOADS OF 100 TO 10000 POUNDS



BEFORE LEVELING



AFTER LEVELING

## CHARACTERISTICS

The mounts consist of two rugged meehanite castings, a resilient pad of knitted stainless steel mesh and pressed steel baseplate. The leveling screw seats into the bottom casting thus providing a built-in leveling device. The excellent damping characteristics of this mount are unaffected by contaminants such as oil, grease or caustics.

## INSTALLATION

Raise the machine with conventional lifting devices; place the mounts beneath the machine feet and attach the leveling screws to the mount. Lower the machine and ensure that the total weight is carried by all of the mounts. Level to a desired height by gradual and sequential adjustment of the leveling screws. Tighten the locknut.

Catalog Number	Load Range		A	B	C	D
	lb.	kgf				
V10Z25-0139-1	100-250	45-113	2 (50.8)	4-1/4 (108)	3-1/2 (89)	5/8-11 UNC
V10Z25-0139-2	250-500	113-227				
V10Z25-0139-3	500-1000	227-454				
V10Z25-0139-4	1000-2000	454-907				
V10Z25-0139-5	2000-4000	907-1814				
*V10Z25-0339	1000-10000	454-4536	2-1/8 (54)	7-45/64 (196)	4-9/32 (109)	1-8 UNC
V10Z25-0339-1	1000-4000	454-1814				
V10Z25-0339-3	4000-7000	1814-3175				
V10Z25-0339-5	7000-10000	3175-4536				

NOTE: Dimensions in ( ) are mm.

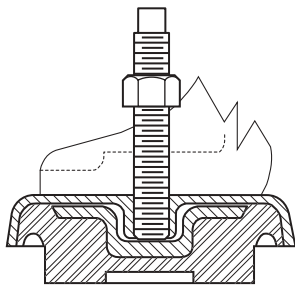
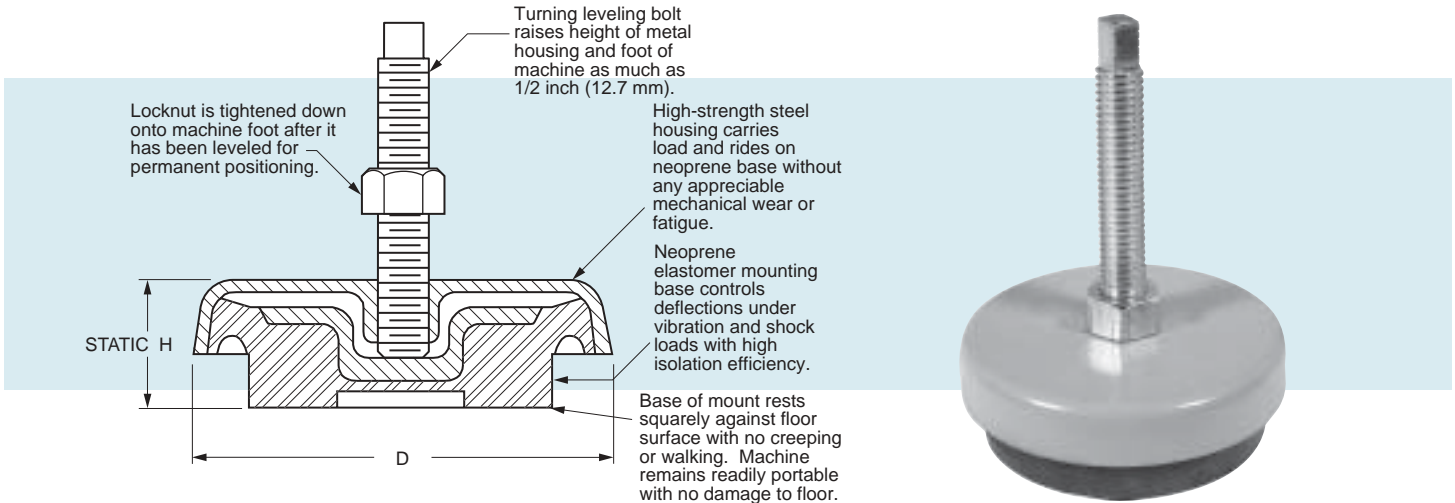
\*To be discontinued when present stock is depleted.



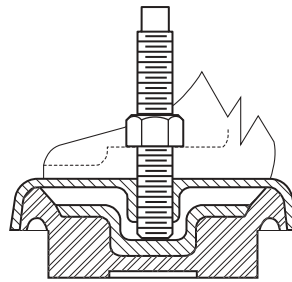
# Leveling Mounts – To 12000 lbs.

www.vibrationmounts.com Phone: 516.328.3662 Fax: 516.328.3365

• FOR LOADS OF 100 TO 12000 POUNDS (45.4 TO 5443.1 kgf)



BEFORE LEVELING



AFTER LEVELING

## INSTALLATION

Raise the machine with conventional lifting devices; place the mounts beneath the machine feet and attach the leveling bolts to the mounting. Lower the machine and ensure that the total weight is carried by all of the mounts. Level to a desired height by gradual and sequential adjustment of the leveling bolts. Tighten the locknut.

NOTE: Dimensions in ( ) are mm.

Catalog Number	Load lb. (kgf)		D Dia.	H Static Height	Bolt Size & Length	Natural Frequency at Maximum Load Hz
	Min.	Max.				
V10Z25-LM3	100 (45.4)	500 (226.8)	3-1/2 (89)	1-1/8 (28.6)	1/2-13 x 3-1/2	8-12 Approximately
V10Z25-LM5	500 (226.8)	1000 (453.6)	5 (127)	1-3/4 (44.5)	1/2-13 x 5	
V10Z25-LM6	1000 (453.6)	4000 (1814.4)	6-1/4 (159)	1-3/4 (44.5)	3/4-10 x 5	
V10Z25-LM8	4000 (1814.4)	12000 (5443.1)	8 (203)	2 (50.8)	1-14 x 8	