

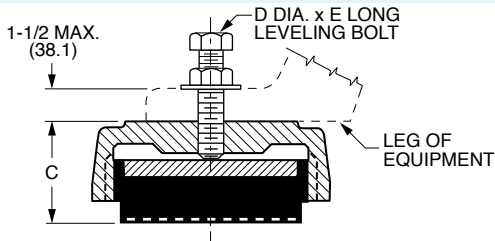
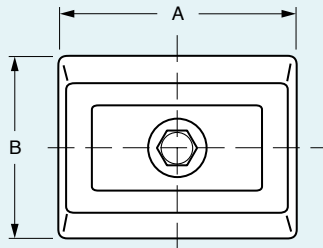


Leveling Mounts – To 1600 lbs.

www.vibrationmounts.com Phone: 516.328.3662 Fax: 516.328.3365

• **MATERIAL:** Housing – Cast Iron
Isolator – Oil-Resistant Neoprene

• **FOR LOADS OF 120 TO 1600 POUNDS (54.4 TO 1134 kgf)**



NOTE: Dimensions in () are mm.



CHARACTERISTICS

The mounts consist of a high-quality, nonskid, neoprene isolation element yielding 1/8 in. (3.2 mm) deflection at rated load, rugged load-bearing top casting and hardware necessary for leveling and fastening equipment to mount. Up to 5/8 in. (15.9 mm) leveling capability eliminates shimming. Bolting equipment to floor is not required.

INSTALLATION

Raise the machine with conventional lifting devices, place the mounts beneath the machine feet and attach the leveling bolts to the mounts. Lower the machine and ensure that the total weight is carried by all of the mounts. Level to a desired height by gradual and sequential adjustment of the leveling bolts. Tighten the lock-nuts.

Catalog Number	Steady Load lb. (kgf)	Max. Impact lb. (kgf)	Dimensions					Maximum Height Adjustment
			A	B	C	D	E	
V10Z12-MA00120	120 (54.4)	90 (40.8)	2-7/8 (73)	2-3/8 (60.3)	1-7/8 (47.6)	5/16 (7.9)	2-3/4 (69.9)	1/2 (12.7)
V10Z12-MA00200	200 (90.7)	150 (68)						
V10Z12-MB00450	450 (204.1)	337 (152.9)	4-15/16 (125.4)	3-7/8 (98.4)	1-3/4 (44.5)	1/2 (12.7)	3 (76.2)	1/2 (12.7)
V10Z12-MB01600	1600 (725.7)	1200 (544)						