

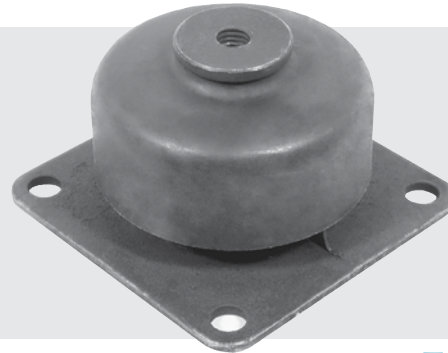
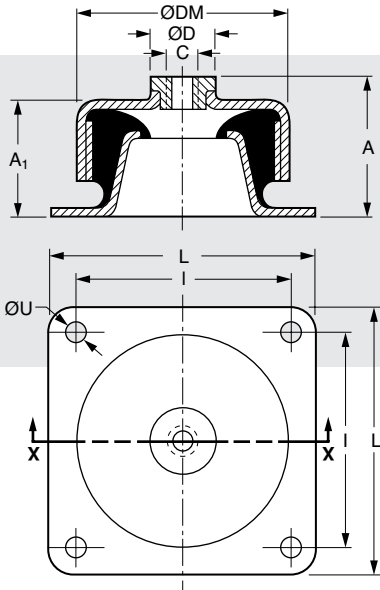


Base Mounts – Cylindrical Type

www.vibrationmounts.com Phone: 516.328.3662 Fax: 516.328.3365

- **MATERIAL:** Isolator – Natural Rubber
Base – Carbon Steel

- **LATERAL STIFFNESS 3 TO 4 TIMES GREATER THAN AXIAL STIFFNESS**



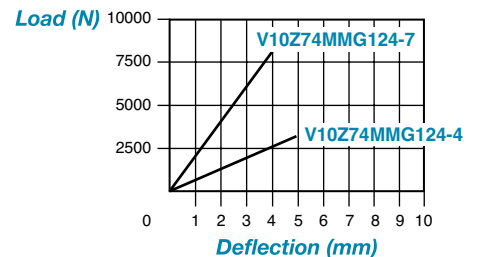
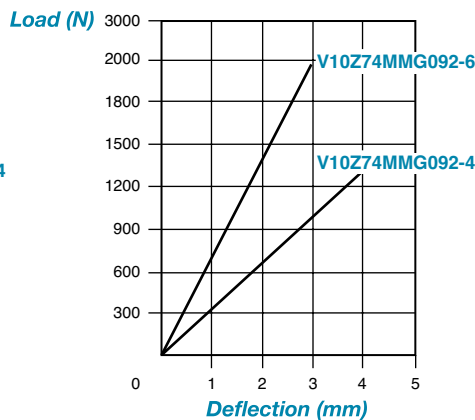
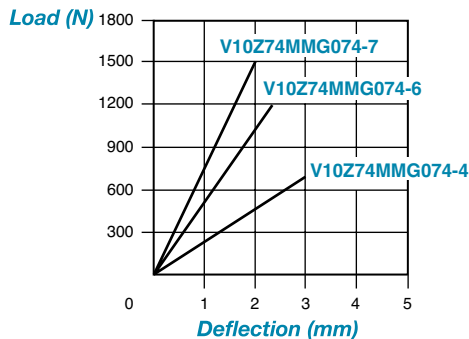
Metric

The projections shown are per ISO convention.

Catalog Number*	DM mm (in.)	A mm (in.)	A ₁ mm (in.)	C	I mm (in.)	U mm (in.)	L mm (in.)	D mm (in.)	Hardness Shore A	Max. Load in Compression N (lb.)	Deflection mm (in.)
V10Z74MMG074-4	74 (2.91)	53 (2.09)	42 (1.65)	M10	72 (2.84)	9 (.35)	90 (3.54)	32 (1.26)	45	700 (157)	3 (.12)
60									1200 (270)	2.5 (.10)	
75									1750 (393)	2 (.08)	
V10Z74MMG092-4	92 (3.62)	63 (2.48)	53 (2.09)	M12	90 (3.54)	11 (.43)	114 (4.49)	36 (1.42)	45	1400 (315)	4 (.16)
60									2000 (450)	3 (.12)	
V10Z74MMG124-4	124 (4.88)	94 (3.70)	75 (2.95)	M16	114 (4.49)	13 (.51)	144 (5.67)	60 (2.36)	45	3600 (809)	5 (.20)
V10Z74MMG124-7									75	8000 (1798)	4 (.16)

*To be discontinued when present stock is depleted.

PERFORMANCE GRAPHS





Base Mounts – Cylindrical Type

www.vibrationmounts.com Phone: 516.328.3662 Fax: 516.328.3365

- MATERIAL: Isolator – Natural Rubber
Base – Carbon Steel, Zinc Plated

- LIMITED SIDE DEFLECTIONS ● EASY LEVELING
- LOW MAINTENANCE

New

Fig. 1



Fig. 2



Metric

SECTION 2

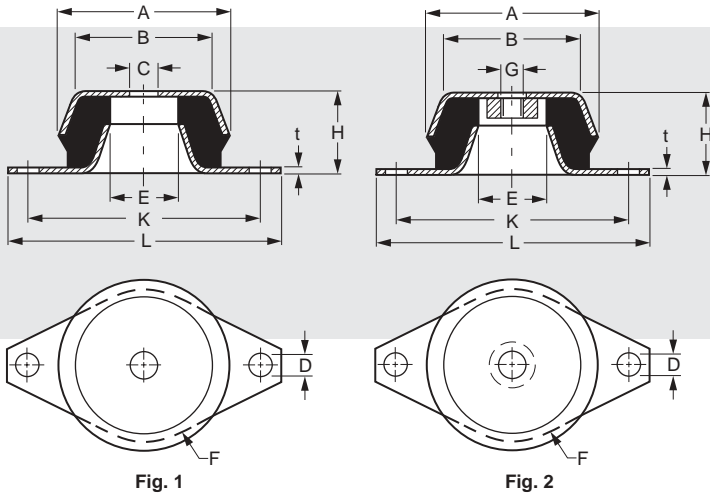
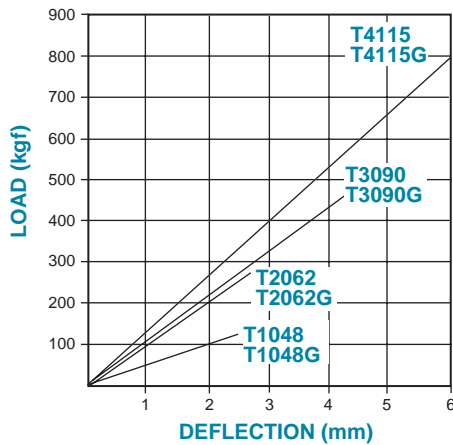


Fig. 1

Fig. 2

The projections shown are per ISO convention.



Catalog Number	Fig. No.	A mm (in.)	B mm (in.)	C mm (in.)	G	D mm (in.)	E mm (in.)	F mm (in.)	L mm (in.)	K mm (in.)	H mm (in.)	t mm (in.)	Static Load kgf (lb.)	Deflection mm (in.)
V10Z55MT1048	1	48 (1.89)	38 (1.50)	8.2 (.32)	—	6.2 (.24)	20 (.79)	42 (1.65)	80 (3.15)	68 (2.68)	23 (.91)	1.5 (.06)	120 (264.6)	2.5 (.10)
V10Z55MT2062		62 (2.44)	50 (1.97)	10.2 (.40)		8.2 (.32)	25 (.98)	55 (2.17)	100 (3.94)	85 (3.35)	30 (1.18)	2 (0.08)	270 (595.2)	3.6 (.14)
V10Z55MT3090		90 (3.54)	73 (2.87)	16.2 (.64)		10.2 (.40)	44 (1.73)	82 (3.23)	130 (5.12)	110 (4.33)	45 (1.77)	3 (.12)	450 (992.1)	4.4 (.17)
V10Z55MT4115		115 (4.53)	98 (3.86)	24.2 (.95)		16.2 (.64)	60 (2.36)	105 (4.13)	190 (7.48)	160 (6.30)	50 (1.97)	4 (.16)	850 (1873.9)	6 (.24)
V10Z55MT1048G	2	48 (1.89)	38 (1.50)	—	M8	6.2 (.24)	20 (.79)	42 (1.65)	80 (3.15)	68 (2.68)	23 (.91)	1.5 (.06)	120 (264.6)	2.5 (.10)
V10Z55MT2062G		62 (2.44)	50 (1.97)	—	M10	8.2 (.32)	25 (.98)	55 (2.17)	100 (3.94)	85 (3.35)	30 (1.18)	2 (0.08)	270 (595.2)	3.6 (.14)
V10Z55MT3090G		90 (3.54)	73 (2.87)	—	M14	10.2 (.40)	44 (1.73)	82 (3.23)	130 (5.12)	110 (4.33)	45 (1.77)	3 (.12)	450 (992.1)	4.4 (.17)
V10Z55MT4115G		115 (4.53)	98 (3.86)	—	M16	16.2 (.64)	60 (2.36)	105 (4.13)	190 (7.48)	160 (6.30)	50 (1.97)	4 (.16)	850 (1873.9)	6 (.24)